

25 October 2016



Poppleton Neighbourhood Plan

Plan

2016-2036

25 October 2016

NETHER WITH UPPER POPPLETON PARISHES NEIGHBOURHOOD PLAN 2016-2036

CONTENTS

Introduction and Background

Aim of the Neighbourhood Plan

Vision Statement

- 1 Preface
- 2 Strategic Context
- 3 Policies
 - 3.1 Period of the plan
 - 3.2 Summary of Policies
 - 3.3 Land Allocation Map
- 4 Greenbelt
 - 4.1 Inner Boundary
 - 4.2 Green Infrastructure
 - 4.3 Green Wedges and Green Corridors
- 5 Conservation Areas, Heritage Assets, Historic Character and Setting, Village Design Statement
- 6 Transport Corridor
- 7 Housing development
- 8 Employment developments
- 9 Education Sites
- 10 Community Facilities
- 11 Environment
- 12 Climate Change and Renewable Energy
- 13 Mineral Extraction and Waste management

Appendix A Letter to City of York Requesting to be a designated area for development of a Neighbourhood Plan, Roadmap of the development of the Neighbourhood Plan. Terms of reference for the Neighbourhood Plan Committee.

Appendix B Detail descriptions of the Conservation Areas and listed buildings from CYC.

25 October 2016

Nether with Upper Poppleton Neighbourhood Plan.

Introduction and background

The preparation of the Neighbourhood Plan for Nether with Upper Poppleton started with the approval of both Parish Councils in May 2014 to assess the desire of the residents to look at potential housing, employment and green spaces within the parish areas.

The designated area was formally approved by the City of York Council and the Planning department of the City of York in October 2014. A department for Neighbourhood Planning was developed within the Council so that direct access to information, resources and staff was available. At the time of the commencement of Poppleton Neighbourhood Plan there were three other parishes, Dunnington, Copmanthorpe and Murton also working with the City of York Council to develop Neighbourhood Plans for their areas. Information was exchanged between these parishes and Poppleton. Locality also provided a 'Road map' methodology, advice and guidance through their website and this has been used extensively by the Neighbourhood Plan Committee to ensure compliance with the law and legal status of the Plan.

The Neighbourhood Plan has been developed against a background of change within the political framework of the City of York Council, the lack of a definitive green belt, and the emergence of a Local Plan. The First Emerging Local Plan was dismissed by the City Council in 2014 as the housing numbers were not considered to be an accurate reflection of need. Since then the City Planners have worked to develop a new Local Plan based on research, demographic trends and employment opportunities in line with current government policy. A new Emerging Local Plan is currently due for consultation in July 2016 with the preferred site allocations being released on the City website in June 2016 during the pre-submission consultation period of this Neighbourhood Plan.

The housing numbers required within the city have changed dramatically and the policy of the present City of York Council is to develop 841 houses per year with a preference for the development of brownfield sites over greenfield sites. There is a proposal for development over 15 years with an extension of 5 years beyond the life of the Local Plan when approved. This has helped to set the parameters for the Poppleton Neighbourhood Plan.

Simultaneously a definitive Green Belt is being developed as the present situation is that the City of York along with 5 other cities in Britain has special status within the Regional Spatial Strategy. The general extent of the Green Belt is already determined in the Yorkshire and Humber Regional Spatial Strategy to 2026 (May 2008) Partial revocation order 2013/(S12013/117). It is for the City Planners, and Councillors of the City of York to agree the definitive Green Belt around the City and surrounding villages.

The Parish Councils of Nether and Upper Poppleton delegated the role of development of the Neighbourhood Plan in compliance with the 2011 Localism Act to a committee comprising initially 2 parish councillors from each parish. This number was later increased to a total of 6 parish councillors. The Neighbourhood Plan Committee is therefore a committee of the parish councils with clear terms of reference. The councillors have worked with professional town planning experts, with assistance from the City of York Council Planning Department on site selection, policy

25 October 2016

development and all legal obligations. The formal adoption of this delegation is noted in the minutes of the separate parish councils available on the parish council websites.

The work has been funded through a series of grants from Locality. Locality is a quasi-government organisation responsible for overseeing the allocation of funding specifically to assist with the development of Neighbourhood Plans in compliance with legal obligations.

The Parish Councils of Nether and Upper Poppleton are separate but have worked through the Neighbourhood Plan committee to develop the Neighbourhood Plan. The Neighbourhood Plan was developed in consultation with land owners, residents of both villages, village organisations, local schools, service providers and businesses. All meetings, seminars, consultation, questionnaires, documents and progress reports are set out in the consultation documentation that accompanies the Neighbourhood Plan to examination.

During the wide consultation with the local community comprising organisations, land owners, business owners, residents and interested parties, updates on the progress of the work were reported to each parish council at their monthly meetings and were recorded in the minutes which are publicly available on the parish council websites. A dedicated website for the Neighbourhood Plan was available and updated regularly at www.plan4poppleton.co.uk.

Various public meetings were held for consultation, dissemination of information, displays of aerial photos and maps indicating areas under consideration in the plan. Newsletters and leaflets with feedback forms were also widely distributed. Examples of these, with formal approval by the respective chairman of the parish councils and notice of the formal application to become a designated area are all included in Appendix A at the end of this document.

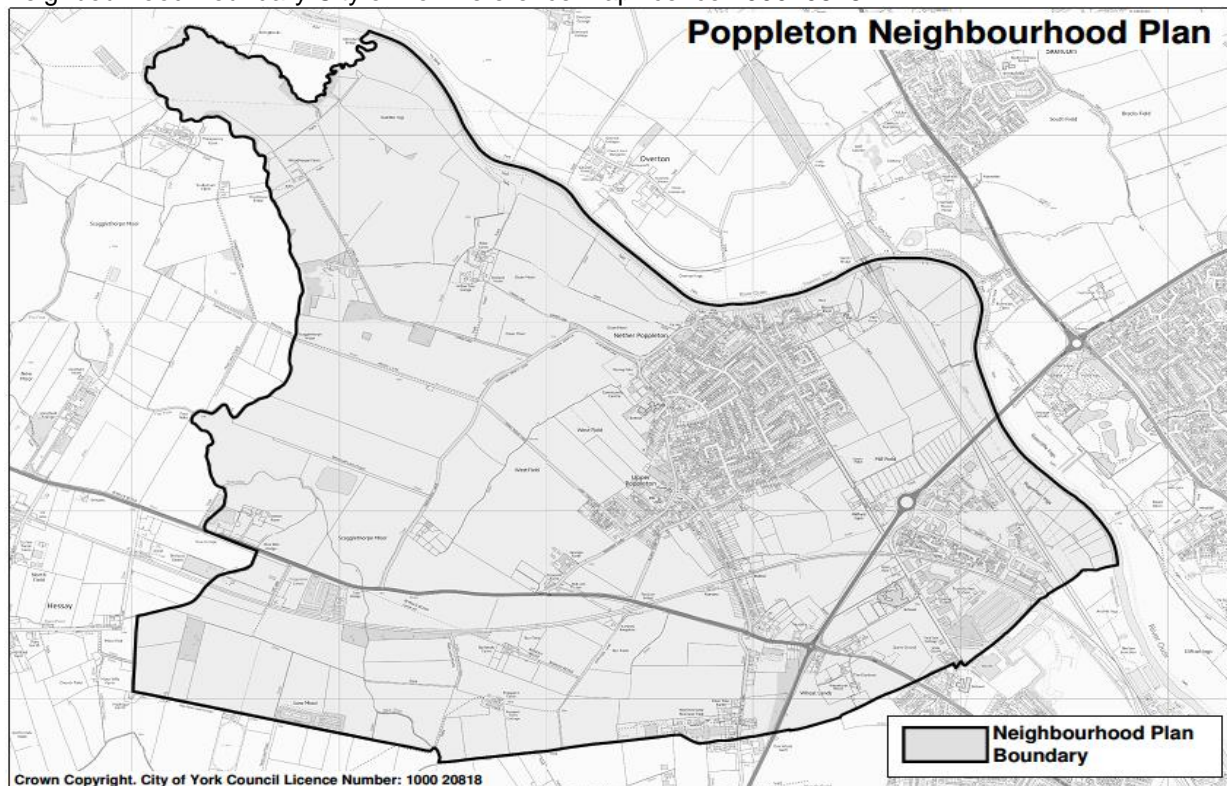
July 2016

25 October 2016

POPPLETON NEIGHBOURHOOD PLAN DESIGNATED AREA AGREED BY THE CITY OF YORK COUNCIL 13 OCTOBER 2014

Map Figure 1 Poppleton Neighbourhood Plan Boundary

Neighbourhood Boundary City of York reference map licence 100020818



All maps produced within this plan are the property of the city of York Council and used under a licence agreement with the City of York Planning Department.

Aim of the Neighbourhood Plan

The aim of the Plan is to manage change in the village and designated area, not to prevent it. Future development should be sympathetic, unobtrusive and in keeping with its rural environment and surroundings. It should:

- Maintain the historic character, setting and identity of Nether and Upper Poppleton village core.
- Manage the growth of new developments of housing and employment within the parished areas.
- Ensure that new development is built to be sustainable and commensurate with the rural setting.
- Ensure that any brown field sites are be developed with the amenities¹, facilities² and road structures that will allow, maintain and enhance the identity of the community.
- Promote development of brownfield sites as a priority over any Greenfield site or grade 1 or grade 2 grade 3a agricultural land classification (ACL).³

¹ Amenities definition pleasantness , pleasant surroundings, open spaces, recreational spaces

² Facilities : doctors, schools, shops recreational areas

³ Natural England recommendation <http://publications.naturalengland.org.uk/publication /35012>

25 October 2016

Vision statement

Nether and Upper Poppleton are two villages that have coalesced to form a distinctly quintessential English Village, with the right array of facilities, amenities and transport links. It is a desirable place to live, work, raise a family and retire to. This is because first and foremost it is a community, with a place identity, shared green spaces, good schools, shops, churches, clubs and most importantly a history of friendliness and caring. These are just some of the key words given by the residents when a questionnaire was analysed by experts in connection with the Neighbourhood Plan for Poppleton.

The Settlement of Poppleton must retain its character as a village on the outskirts of the historic City of York.

This is reflected in the sustainability of the settlements of the villages and it is what the Parishes of Nether and Upper Poppleton would wish to see developed on the brownfield area at the Former British Sugar Site (FBSS) reflecting a mix of housing that supports young and elderly.

Within Nether and Upper Poppleton designated parish area sustainability means the development of proposals that this Neighbourhood Plan seeks to promote by:

- Building a mix of housing on allocated sites, particularly ST1(CYC unadopted Local Plan reference), with the correct amenities to allow communities to develop.
- Protecting agricultural land and green belt land from inappropriate development and retain its growing potential and open character.
- Ensuring that houses are not built as schemes that see one size fits all, stratify the housing types to match the needs of people at different stages of their housing life cycle and hence build communities and cohesion.
- Ensuring that any housing developments **within** the historic villages of Nether and Upper Poppleton are commensurate with the setting in terms of building materials, layout and garden space as set out the in the Poppleton Village Design Statement (2003)(PVDS).
- Making sure that further business park developments are maintained within the current locations.
- Ensuring that historic views of York and the Minster in particular are retained.
- Ensuring that appropriate transport links are in place so that the village is not a continual rat-run used to avoid congestion on the A 1237 Outer Ring Road.
- Ensuring that there are safe cycle/pedestrian shared spaces within the village and connecting to the City of York to promote healthy living for all.

25 October 2016

1 PREFACE

1.1 The Poppleton Neighbourhood Plan 2016 – 2036 has been produced by Nether with Upper Poppleton Parish Councils under powers granted in the Localism Act 2011. It has been prepared by a Neighbourhood Planning Group comprising Kathie Brydson, Peter Powell, Vivien Crabb, Edie Jones, Roper Langford and Don Simpson, following extensive consultation with residents, businesses and representative groups. The Neighbourhood Plan Area which covers the entire parishes, was formally designated by the City of York on Monday 13th October 2014 at a meeting in West Offices, Station Rise, York.

1.2 The Neighbourhood Plan has been prepared against a background of an emerging draft Local Plan being prepared by the City of York Council for the years 2012- 2032 with a five year extension to 2037. The Local Plan and the process of its preparation have been subject to uncertainty following a resolution by the City Council Members to ask that the Draft Publication Local Plan version be rejected while further work is undertaken on the figures for housing needs across the City which includes Poppleton Parishes. Further information from the City on this is not now expected until after the Preferred Sites Local Plan consultation period due to end in Mid-September 2016. In the meantime, a number of planning applications which have the potential to affect the development of Poppleton have been either submitted or are subject to public consultation. It is therefore vital that this Neighbourhood Plan proceeds without delay if the aims of the Localism Act are to be realised within the Poppleton Parishes.

1.3 During the 2nd pre-submission consultation of the Neighbourhood Plan the City of York Council Local Plan Working Group presented housing numbers to the Council indicating that based, on current intelligence, 841 houses per annum over the 20 year period of the Local Plan would be required to meet and satisfy demand. The Local Plan period will now be from 2012 -2037.

1.4 The Local Plan Preferred Sites consultation document by the City of York Council was made available for member discussion at the Local Plan Working Group on 27th June 2016 and the Executive on 30th June 2016 wherein it was approved for city wide public consultation from 18 July 2016⁴ for an eight week period. This document also indicated that there was likely to be a change in the designation of certain areas within the parishes of Nether and Upper Poppleton. This has been considered in the consultation documentation which accompanies this Neighbourhood Plan.

1.5 A consultant from H & H Land Planning Consultants was engaged to ensure that policies were developed to reflect the residents' concerns, aspirations and thoughts on housing developments and to ensure that these were translated into the appropriate language to fulfil the requirement for Submission, Examination and Referendum procedures.

25 October 2016

1.6 A consultant from AECOM was engaged by the Committee to complete the Environmental Report based on the Scoping Opinion and Site Assessment which took place in 2015-2016 prior to the 2nd pre-submission consultation.

2 STRATEGIC CONTEXT

National Planning Policy Framework (NPPF) (2012) paragraph 7. There are three dimensions to sustainable development:

Economic Role: contributing to building a strong, responsive and competitive economy, by ensuring that sufficient land of the right type is available in the right places at the right time to support growth and innovation and by identifying and coordinating development requirements including the provision of infrastructure.

Social Role: supporting strong, vibrant and healthy communities, by providing the supply of housing required to meet the needs of present and future generations and by creating a high quality built environment, with accessible local services that reflect the community's needs and support its health, social and cultural well-being.

Environmental role: contributing to the protection and enhancement of our natural, built and historic environment; and, as part of this, helping to improve biodiversity, using natural resources prudently, minimising waste and pollution and mitigating and adapting to climate change which includes moving to a low carbon economy.

2.1 The Strategic Context in planning terms for this Neighbourhood Plan is one where there is no adopted Local Plan for the City of York. While work has been ongoing for many years on a Local Plan, the latest draft, in September 2014, was rejected by the City of York Council (CYC) largely due to concerns over the number and distribution of housing to be provided over the plan period. New work is currently being undertaken by CYC officers and the Councillors of the Local Plan Working Group to provide a strategic direction for the City. However, this is no reason to delay further the preparation of a Neighbourhood Plan for Poppleton.

City of York Background Statement from the Preferred Options consultation.⁵

City of York Council is preparing a Local Plan for York which sets out the spatial vision for the city for the next 15 years and the green belt boundaries beyond this time period. This process requires us to understand what the key drivers of change for the city are and how we would like to see York in the future. Its main function is to help direct and managed different development across the city whilst simultaneously supporting economic prosperity, promoting a sustainable environment and creating an inclusive place to live.

The City of York Council commissioned GL Hearn to undertake a Strategic Housing Market Assessment (SHMA) which has only been in the public domain during the preferred sites consultation period from 18 July for eight weeks. This report has indicated that 841 houses per annum would be sufficient to meet the projected housing needs up to 2037 which is co-temperaneous with the Poppleton Neighbourhood Plan timescale.

⁵ This is information lifted directly from the Preferred Options consultation on the Local Plan released on 18 July 2016 for public consultation.

25 October 2016

Green Belt (extract from the Local Plan 2016 consultation p 14)

The emerging Local Plan will set York's detailed green belt boundaries for the first time guided by the National Planning Policy Framework (NPPF).

NPPF states that Local Authorities with green belts in their areas should establish green belt boundaries in their local plan which should only be altered in exceptional circumstances. Importantly, the Plan should accommodate development needs stretching well beyond the plan period and the LPAs should "satisfy themselves that green belt boundaries will not need to be altered at the end of the development plan period" (NPPF Para 85)

Policies relating to the general extend of a green belt around York were expressly secluded from the revocation of RSS. These policies set out the main purposes of a green belt surrounding York which is to ..."protect and enhance the nationally significant historic and environmental character of York, including its historic setting, views of the Minster and important open areas" (RSS Policy Y1 York Sub area).

Counsel's latest advice on the issue of green belt permanence (John Hobson QC Jan 2015) refers to NPPF guidance. In particular the need for consideration to be given to the development needs of the area, both within the plan period and the longer term. If land is left within the green belt that would be contrary to the overriding requirement of the permanence, because it is known that further development land will be needed to meet future development needs.

In respect of the duration of the green belt, a minimum of 20 years reflects longstanding advice and best practice. In January 2000 COYC received an interim view from its Local Plan Inspector on the Plan's proposed Green Belt boundary. The inspector advised that the Council's position – to establish a 'non-permanent' or 'interim' green belt and undertake a formal green belt review immediately after the plan's adoption- ran contrary to government guidance which states that Green Belts should be ' permanent', importantly advocating that they remain unchanged for at least 20 years.

LOCAL PLAN PREFERRED OPTIONS POSITION.

The preferred options consultation draft of the Local Plan and the (subsequently abandoned) publication draft that was considered by Cabinet on 25th September 2014 included a policy and allocations of safeguarded land. This land is intended as a reserve for considerations for development at the time of a subsequent plan review. Its purpose is to help ensure that the Green Belt as defined in the Local Plan endures beyond the Plan period.

There has been considerable debate about both the need for such land to be designated and the duration of a 'permanent' green belt. The preferred options draft Local Plan and the subsequent publication draft sought to apply the national and saved regional policies in setting out the extent of the Green Belt and identify a reserve of safeguarded land to ensure that Green Belt boundary was capable of enduring beyond the period for 10 years. This was to ensure that the Plan was fully NPPF compliant and to reduce the risk of challenge.

In the latest consultation Local Plan preferred sites consultation (2016) the safeguarded land is no longer designated. This ensures that COYC can meet long term development needs stretching well beyond the plan period and that green belt boundaries will not need to be altered at the end of the plan period.

25 October 2016

The Poppleton Neighbourhood Plan welcomes this clear position on Green Belt but needs to see how this will impact on the historic setting and character of the villages of Nether and Upper Poppleton and the parish area. There are significant areas of Poppleton lying currently within what is considered as Green Belt.

2.3 Despite the problems in adopting a Local Plan in York, there is some strategic policy available for CYC in the form of Green Belt Policy. This says:

'Despite the fact that the York Green Belt is still technically a draft Green Belt, it has 'de facto' been in existence for several decades and has been reaffirmed on numerous occasions in planning refusals and dismissal of planning appeals. It was specifically recognised within the Yorkshire and Humberside Regional Spatial Strategy (RSS) to 2026 adopted in 2007 and although the RSS was substantially revoked by an order (SI No 2013/117) made in early 2013 under the Localism Act 2011, policies which related to the York Green Belt were specifically excluded from the revocation.'

*Quote from report by City of York Council
(July 2015)*

RSS York Green Belt policies

POLICY YH9: Green belts

C The detailed inner boundaries of the Green Belt around York should be defined in order to establish long term development limits that safeguard the special character and setting of the historic city.

POLICY Y1: York sub area policy

Plans, strategies, investment decisions and programmes for the York sub area should:

C Environment

1. In the City of York LDF, define the detailed boundaries of the outstanding sections of the outer boundary of the York Green Belt about 6 miles from York city centre and the inner boundary in line with policy YH9C.

2. Protect and enhance the nationally significant historical and environmental character of York, including its historic setting, views of the Minster and important open areas.

This is also cross referenced in section 4.2 with specific reference to Green Infrastructure.

2.4 This makes clear that the boundaries of the Green Belt around York have not been formally adopted and it remains for the emerging Local Plan to do this on a strategic basis.

2.5 The general extent of the Green Belt is already determined in the Yorkshire and Humber RSS to 2026 (May 2008) Partial Revocation order 2013(S12013/117)

25 October 2016

Overall Housing need in York⁶

Taking account of more recent migration (Mid Year Population Estimates 2013 and 2014 ONS- office of National Statistics) and improvements to household formation rates for younger households (25- 34 yrs. age group), the SHMA (Strategic Housing Market Assessment) draws the conclusion on the overall full objectively assessed need for housing over the 2012- 2032 period to be 841 dwellings per annum. The breakdown of this figure includes the provision of affordable homes as part of the overall housing delivery. The timescale for the commencement of the plan is redundant to so the plan will now run till 2037. During the period 2012 -2016 when no Local Plan was adopted a large number of houses have been completed in the York area. A further development of housing in the surrounding areas of Hambleton, Selby and the East Riding has contributed significantly to the housing stock in the travel to work area surrounding York. The Local Plan provides further development land to 2037 (including some flexibility in delivery) and establishes a green belt boundary enduring 20 years. (P 15)

Policies for what proportion of homes should be affordable need to take account of evidence both of housing need and the viability of residential development. This work on viability and deliverability against the policies in the emerging Local Plan will be undertaken to inform the revised Publication Draft Local Plan to be brought to members of the Local Plan Working Group later in 2016.

⁶ This statement is taken directly from the Local Plan Preferred Sites consultation published 18 July 2016

25 October 2016

3 POLICIES

3.1 Plan period 2016 – 2036

It is proposed that a twenty-year period is appropriate both in economic, business, housing planning and sustainability terms. This is in line with the emerging Local Plan 2012-2037 consulted upon during the summer of 2016.

3.2 Summary of the Policies

Green Belt Policy PNP1
Any development, within the general extent of the Green Belt, which harms the open character and setting of either York or the villages of Nether and Upper Poppleton, other than that covered by permitted development rights as defined by paragraph 87-89 of the NPPF, will not be permitted
Green Infrastructure PNP 2A
The Green Infrastructure within and surrounding the Poppletons (G1) will be protected and enhanced and will be expanded as the opportunity arises
Green Infrastructure PNP 2B
No development which harms, directly or indirectly, the integrity of this infrastructure should be permitted. Green Infrastructure in Poppleton particularly refers to: green corridors and green wedges, villages greens, riverbank, wild life areas, roadside swathes, paddocks, allotments, sports field areas, walking and equestrian routes
Conservation Areas Policy PNP 3
Any development and land use within the conservation areas must respect the open character and heritage assets of the villages as set out in the Conservation Areas CYC 16 and 17.
Village Design Statement PNP 4
All new developments within the settlement limits of the villages will be considered in relation to the guidelines in the Village Design Statement (VDS) as far as they are material to the proposal.
Traffic Policy PNP 5
Improved and extended cycle and pedestrian access to and from the village in relation to Manor Academy, local villages and the City will be supported.

25 October 2016

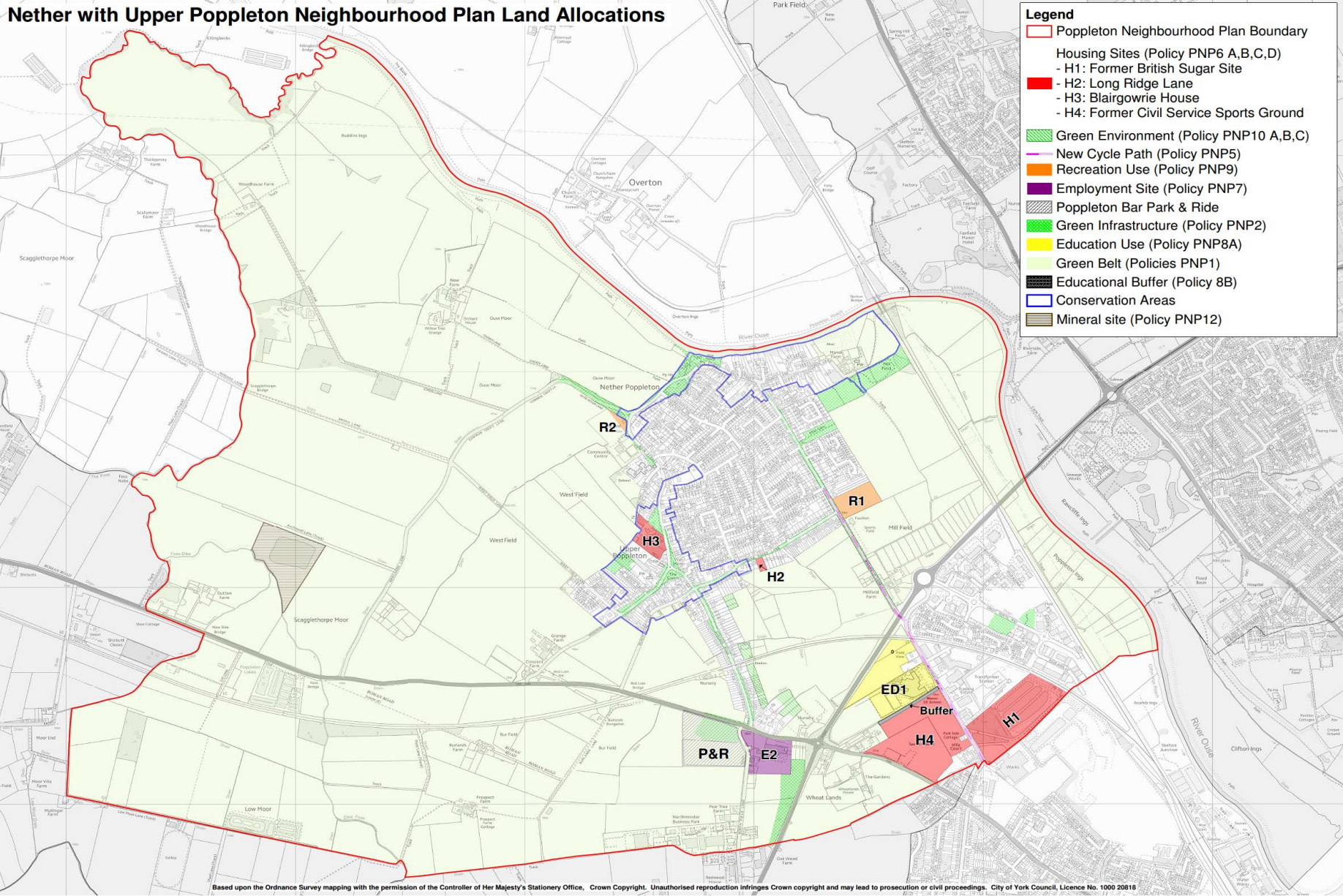
Housing Policy PNP 6A
<p>Housing proposals will be supported where they meet any of the following criteria:</p> <ol style="list-style-type: none"> 1. The site is allocated on the land allocations plan for residential use as follows: <ul style="list-style-type: none"> H1 The former British Sugar Site (ST1) (City of York reference)(1100 houses of which 300 approx. are in Poppleton) H2 Long Ridge Lane plots(2 dwellings) H3 Blairgowrie Site (replacement dwellings and outbuildings) H4 Former Civil Service area including the adjoining agricultural land(261 houses) 2 The proposal is the subdivision of an existing dwelling and in compliance with other planning policies including all parking to be on site. 3 The proposal is for the conversion of an existing building that is of some heritage value worthy of retention and is in sound structural condition. The building should be genuinely redundant and it can be demonstrated its loss will not generate demand for a replacement building in the future 4 Any development within the village must be within the village settlement limit as shown within the PVDS
Housing Policy PNP 6B
<p>The redevelopment of the buildings on the Blairgowrie site will only be permitted where it replaces the existing building on the same scale and to the same extent. It should maintain and enhance the character of the mature planting, landscaping and the conservation area generally.</p>
Housing Policy PNP 6 C
<p>Any proposal for subdivision of an existing site creating back-land over-development will only be permitted when it does not contravene the Neighbourhood Plan para 7.4 definition of over-development.</p>
Housing Policy PNP 6 D
<p>Housing on the Former British Sugar Site (H1)(ST1) is supported with mixed housing types, amenities and facilities for the community and the main entrance is off the Boroughbridge Road.</p>
Business and Employment Policy PNP 7A
<p>Where new business development takes place on Business Parks there must be sufficient parking for employees and customers within the site boundaries.</p>
Business and Employment Policy PNP 7B
<p>Employment uses at E2 will be permitted but limited to redevelopment on the footprint and height of the current building in order to preserve the open character of the Green Belt.(proposed change of land use received 18 July 2016)</p>
Education Policy PNP 8A
<p>Site Ed 1 on the land allocations plan will be safeguarded for future school playing field, allotments and woodland expansion.</p>
Education Policy PNP 8B
<p>A buffer zone on the grade 2 agricultural land to the east of the school will be safeguarded, landscaped and planted to ensure that adequate separation and privacy is maintained between the school, the agricultural field, and any future housing development that might occur.</p>

25 October 2016

Community Facilities PNP 9A
The land adjacent to the Poppleton Tigers Junior Soccer Pitches shown as R1 on the land allocation plan will be reserved for recreational space to provide a sports venue for the village.
Community Facilities PNP 9 B
Land adjacent to the Community Centre should be developed as a play area for children of all ages (R2)
Environmental Policy PNP 10 A
Woodland areas will be protected and managed to maintain the habitat for wild life to sustain biodiversity in conformity with NPPF 109-125. Forestry work on trees covered by TPOs in Poppleton shall only be carried out following planning applications and approval by CYC Ecology Department. Where a tree or trees are removed due to disease or for safety reason a replacement should be planted on or near the original position.
Environmental Policy PNP 10 B
All the hedgerows within the villages and Neighbourhood Plan boundary play a vital part in assisting breeding areas for wildlife and will be protected. "Countryside Hedges" as defined under Hedgerow Regulations ⁷ 1997 and any deemed to be "important hedgerows" will require planning consent for their removal as approved by CYC Ecology Department. In Poppleton this includes former field boundary hedgerows.
PNP 11 Climate Change and Renewable Energy
Any development or new build, (with particular reference to large scale housing developments such as former British Sugar Site) should comply with or exceed the Building Regulations with regard to energy conservation and use of renewable energy technology and should consider the following :- harvesting of rain water and storm run-off, grey water recycling, porous surface provision wherever appropriate, solar photovoltaics for energy capture and high standard insulation of floors, walls, and roofs to reduce energy consumption.
PNP 12 Mineral Extraction and Waste
The Neighbourhood Plan would seek to ensure that any exploration or excavation carried out would be followed by permanent re-instatement and restoration of the Green Belt. Indigenous tree planting and landscaping to the area should help to re-establish wild life habitats.

[Site allocations map on page 15](#)

⁷ Hedgerow regulations (1997) no 116



25 October 2016

4 Green Belt

As Green Belt in York refers to the RSS greenbelt, within this document green belt will concur with the City of York definition.

The Green Belt serves five purposes:⁸

- To check unrestricted sprawl of large built-up areas.
- To prevent neighbouring towns merging.
- To assist in safeguarding the countryside from encroachment
- To preserve the setting and special character of historic towns and
- To assist in urban regeneration by encouraging the recycling of derelict and other urban land.

4.1 Inner Boundary of the Green Belt

4.1.1 The Inner Green Belt Boundary for the City of York lies in part within Nether and Upper Poppleton and it is appropriate that the Neighbourhood Plan sets out in detail where it lies within the neighbourhood area. It is shown on the land allocations plan. The draft 'original' Green Belt inner boundary for the City of York followed the old City of York boundary prior to 1996.

4.1.2 The villages of Poppleton by the nature of the development that has taken place straddle the outer and inner green belt boundaries but the policy PNP1 is to support a green swathe to be maintained between the City of York and the villages of Nether and Upper Poppleton. This is the section of land on either sides of the A 59 when exiting York to the west and on south side of the A 1237. Being less than 600m wide at its narrowest point this area of Green Belt provides an important function.

4.1.3 The Green Belt land surrounding the villages of Nether and Upper Poppleton forms an important part of the special open and agricultural character of the setting of the nationally significant historic city of York. Together with the other Green Wedges and Green Infrastructure land surrounding the villages they play an important role in maintaining the identity, character and setting of the Poppleton Villages.

4.1.4 It is accepted that if new housing and business development envisaged in the Draft Local Plan preferred sites consultation (July 2016) is to be accommodated, then this should be on **Brownfield sites**. Limited green field agricultural land should be used in this twenty year period H 4 (Civil Service and agricultural land). All Brownfield and windfall sites acknowledged by the City of York planning department should be brought back into use in the first instance.

4.1.5 The Green Belt Policies of the Neighbourhood Plan are in conformity with the NPPF para 79-92 and NPPF para 17 in relation to protecting high quality agricultural land.

The Green Belt around the City of York is now established only within the 2013 Order (SI 2013 No 117) which specifies it only in a general way, but goes on to say that 'the inner boundaries would be defined in order to establish long term development limits that safeguard the special character and setting of the 'historic city' and that plans should define the detailed boundaries of the outstanding sections of the outer boundary of the York Green Belt about 6 miles from the York City Centre. The

⁸ Ref NPPF para 80

25 October 2016

NDP allocates land for development which is consistent with the emerging CYC Green Belt ideas with small modifications. It is considered that these modifications are appropriate and do not undermined the purpose or character of the York Green Belt.

Basic Conditions Statement p 8

4.1.6 The Green Belt plays an important role in determining the setting, character and identity of the villages of Poppleton. Areas of the City of York Green Belt lie within the parishes of Nether and Upper Poppleton. The setting offers access to the countryside and riverside walks into York to the east and to the neighbouring village of Moor Monkton to the west. The countryside is grade 1 agricultural land and extensively cultivated by local farmers some of whom live in the villages of Nether Poppleton and Upper Poppleton. (City of York Map illustrates the agricultural land DEFRA 2002 commissioned and updated by Natural England 2010) page 38

4.1.7 The Green Belt surrounding the Poppleton villages has a high landscape and heritage value, characterised by the network of fields, ancient hedgerows, fences, copses and country lanes with individual farmsteads and associated outbuildings. The Landscape Appraisal carried out for the City of York Council by the University of Sheffield Environmental Consultancy in December 1996 stated that the grade 1 agricultural land surrounding Poppleton is the best agricultural land in the area as indicated on the York City Council land use map. (page 38)

4.1.8 The Green Belt to the west and south of Poppleton is prime food-producing arable farmland and is in the top land by quality in the Yorkshire and Humberside Region. With a rapidly growing world population and the increasing demand for meat and more 'Western' diet caused by growing prosperity in developing countries, the pressure on food-producing land is increasing dramatically. Food sourcing and food security are becoming significant political, if not existential, issues and it is therefore becoming crucial to retain the country's good quality farmland for food production. This is clearly stated in NPPF para 17.

Appendix B Village Design Statement in full on the website www.plan4poppleton.co.uk

Green Belt Policy PNP1

Any development, within the general extent of the Green Belt, which harms the open character and setting of either York or the villages of Nether and Upper Poppleton, other than that covered by permitted development rights as defined by paragraph 87-89 of the NPPF, will not be permitted

National Planning Policy Framework p21

Para 87 As with previous Green Belt policy, inappropriate development is, by definition, harmful to the Green Belt and should not be approved except in very special circumstances.

Para 88 When considering any planning application, local planning authorities should ensure that substantial weight is given to any harm to the Green Belt. 'Very special circumstances,' will not exist unless the potential harm to the Green Belt by reason of inappropriateness, and any other harm, is clearly outweighed by other considerations.

25 October 2016

Para 89 A local planning authority should regard the construction of new buildings as inappropriate in Green Belt. Exceptions to this are:

- Buildings for agriculture and forestry;
- Provision of appropriate facilities for outdoor sport, outdoor recreation and for cemeteries, as long as it preserves the openness of the Green Belt and does not conflict with the purposes of including land within it;
- The extension or alteration of a building provided that it does not result in disproportionate additions over and above the size of the original building;
- The replacement of a building, provided the new building is in the same use and not materially larger than the one it replaces;
- Limited infilling in villages, and limited affordable housing for local community needs under policies set out in the Local Plan; or
- Limited infilling or the partial or complete redevelopment of previously developed sites (brownfield land), whether redundant or in continuing use(excluding temporary buildings), which would not have a greater impact on the openness of the Green Belt and the purpose of including land within it than the existing development.

4.2 Green Infrastructure

City of York Local Plan draft publication 2014

Green Infrastructure is the term used for the overarching framework related to all green assets. Traditionally, environmental planning has looked at the functions of these assets in isolation, such as biodiversity, Open Space provision or public realm design. Whilst we should not devalue the benefits of looking at these issues individually, a Green Infrastructure approach considers how together these assets form an overall" system" that is greater than the sum of its individual parts.

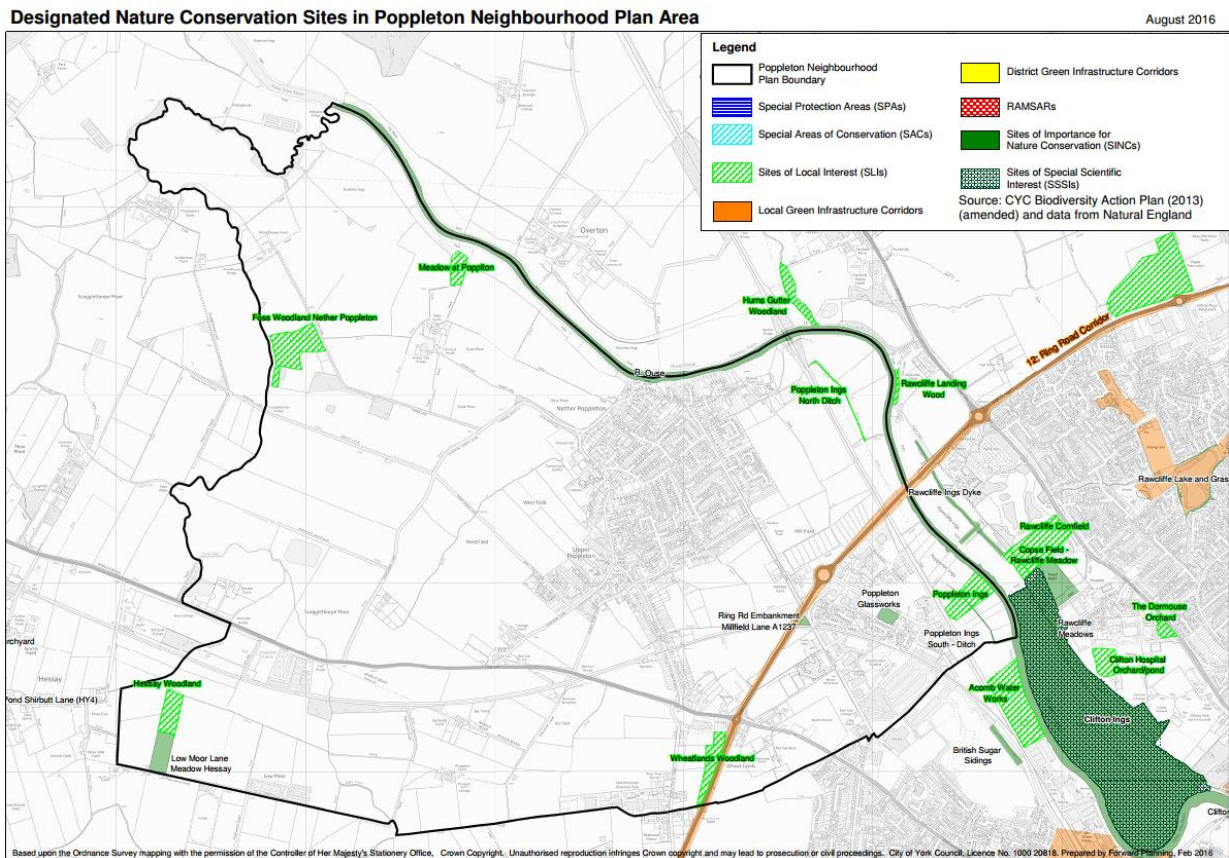
Definition of Green Infrastructure Assets 2009

Green Infrastructure is the term used for the overarching framework related to all green assets. In broad terms Green Infrastructure includes semi-natural habitats such as grasslands, woodlands, moorlands and river corridors: nature reserves and other outdoor destinations; cultural and historic landscapes such as parks and gardens. York's Ings and Strays, historic buildings and ancient monuments; as well as features of wider rural landscape such as footpaths, hedgerows, paddocks and game coverts. The historic landscape provides the City and its outlying villages with a rural setting contributing much to its character.

25 October 2016

Total parished area showing the importance of the green infrastructure surrounding the villages.

Map G 1 Crown Copyright produce by permission of CYC licence no 100020818



4.2.1 There are many areas around Poppleton that play an important role in providing a haven for wildlife including several species on the 'red list'. The British Trust for Ornithology carries out regular surveys on the fields adjoining the village and the Nether Poppleton Parish Council in conjunction with the Conservation Volunteers Trust has preserved an area of woodland which hosts a wide variety of native birds and wild life. From the definition provided above there are many areas within the village area of the Poppletons that can be considered as Green Infrastructure providing natural and semi-natural habitats. These areas of wild life include paddocked areas, grasslands and extended gardens in the Green Belt to the rear of properties along both sides of Station Road as well as in Nether Poppleton conservation area.

4.2.2 There are areas within the Nether Poppleton village which contribute to the open character of the Green Belt. These areas are included within the Green Belt Designation in order to give additional protection to these sensitive areas. This is in compliance with NPPF 76-78 which recommends special protection for these areas which may be valued by the local community. These are illustrated on map GI and also on the land allocation map in green

4.2.3 Parish Council managed and/or supported preserved green infrastructure areas

- The Moat Field, with visual evidence of a Saxon Manor House; managed by a committee reporting to and supported by Nether Poppleton Parish Council.
- The Millennium Green with a recently developed wetland area; managed by a charitable trust with financial help from both Parish Councils.

25 October 2016

- The Tithe Barn Sensory Garden to mirror the planting evident in early Elizabethan Times; managed by a charitable trust.
- Pond and Wildlife area, managed by a committee reporting to and funded by Nether Poppleton Parish Council.
- The Village Green where the Children's Sport's day, and the Act of Remembrance Service takes place and which is the site of the Upper Poppleton War Memorial; managed and maintained by Upper Poppleton Parish Council.
- Chantry Green which adds a welcome swathe of green to the Main Street area of Upper Poppleton; managed and maintained by Upper Poppleton Parish Council.
- The Poppleton Lido and the riverside, which affords beautiful views of the river and open countryside and the expanse of green fields that surround the settlement. It is the site of the Nether Poppleton war memorial recently restored in preparation for the centenary of the First World War; managed and maintained by Nether Poppleton Parish Council.
- The swathes of green around the village particularly on the entrance to Upper Poppleton along Hodgson Lane, green verges and common land used by children and adults alike.
- Many of the areas shown in G1 as green infrastructure are used for recreational purposes such as allotment gardening, woodland walks with special interest, and walks on the river banks where Tansy Beetles are being monitored. It is the purpose of the Green Belt Infrastructure Policies as a whole to preserve and protect the open aspect of the village to promote a healthy environment for all.
- NPPF 76-78 indicates that it has to be shown that the green area is special to the local community and the indications from the Environmental Report, the initial survey amongst the residents of the village and the many consultations that have taken place over the period of development of this plan have indicated that the green spaces and the provision where possible to expand them are of high importance to the residents of the villages.

4.3 Green Wedges and Green Corridor

City of York Council Technical Paper Green Corridors adopted 2009,

Establishment of a hierarchy of Green Corridors

_ Officers identified a hierarchy using Natural England's function matrix which set out all functions of Green Infrastructure identified in the regional evidence base. The corridors were named and graded – the more core functions they have, the higher up the hierarchy they are placed. Based on this approach, the regionally significant corridors in York are the Ouse, Foss and Derwent corridors (this includes the flood plains and the footpaths/ cycle ways alongside them)

4.3.1 The Green Corridors and Green Wedges are a characteristic feature of York. They form large tracts of undeveloped land which largely extend from the countryside into the city. They prevent the lateral coalescence of different parts of the urban area and still retain the distinctive characteristic of earlier periods of individual settlements. The green wedges bring the countryside to within close proximity of the centre of the city. Their open nature allows views of the city to be enjoyed including important vistas towards the Minster. The Poppletons provide many of these green corridors and wedges to the York

25 October 2016

4.3.2 The green wedges comprise the historic "strays" and the Ouse "ings" and additional areas of undeveloped land which separate the existing urban form. The river banks in Nether Poppleton have an important part to play in the protection of the rural aspect as well as providing additional floodplain for the Ouse. The River Ouse skirts the northern border of Nether Poppleton.

4.3.3 The villages surrounding York (including the Poppletons) contribute, both individually and in conjunction with each other, to the setting and the special character of the city through their intrinsic form and character, distribution, and relationship with the surrounding agricultural landscape. This has helped engender their separate sense of community distinct from the urban area of York. The Village Design Statement highlights the relationship that the Poppletons have with other villages Para 4(vii) (VDS).

4.3.4 This Neighbourhood Plan when adopted will ensure that the Green aspects that surround the villages and clearly identify their rural setting will be retained. This is particularly important to identify the boundary between the city and the rural countryside.. It will help to fulfil the function of a green belt which is to prevent coalescence between the urban and rural areas.

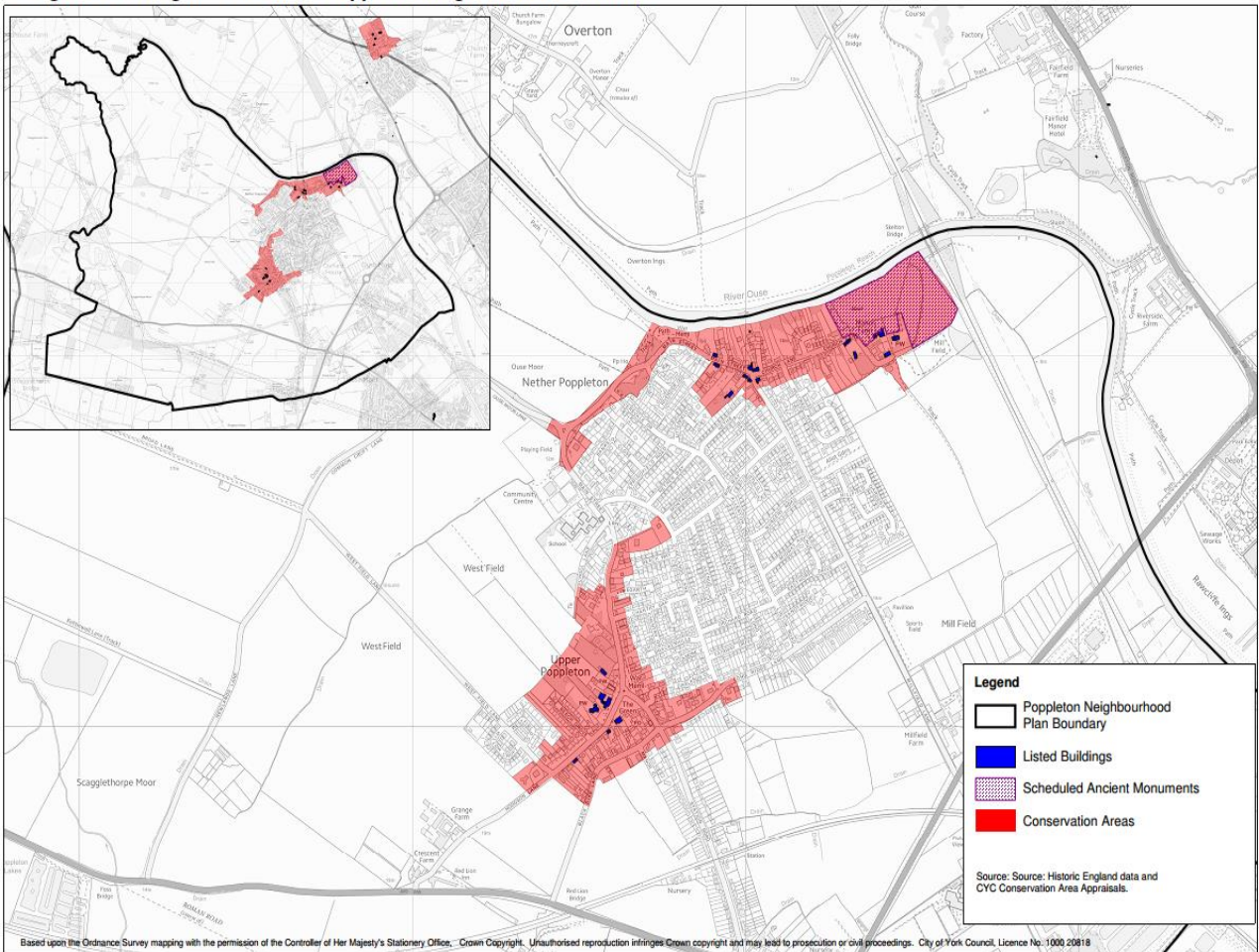
4.3.5 The area along the riverbank in Nether Poppleton needs to be protected because of the biodiversity of wild life. Kingfishers, otters, deer and other wild life are frequently seen in the area. It is also prone to flooding and is a valuable asset in protecting York centre from flooding. Upstream at Moor Monkton there is a large water extraction point, which is monitored during times of flood. Without this much of the centre of York would be under water more frequently.

4.3.6 The open access to the green spaces and countryside walks is much prized as noted by 88% of local residents in a recent survey (2014 report) on the plan4poppleton website

Green Infrastructure Policy PNP 2 A
The green infrastructure within and surrounding the Poppletons (G 1) will be protected and enhanced and will be expanded as the opportunity arises.
Green Infrastructure Policy PNP 2 B
No development which harms, directly or indirectly, the integrity of this infrastructure should be permitted. Green infrastructure in Poppleton particularly refers to green corridors , green wedges, village greens, common land, river bank, wild life areas, roadside swathes, paddocks, sports field area, allotment sites, walking and equestrian routes.

5 Conservation Areas

Designated Heritage Assets within Poppleton Neighbourhood Plan Area



5.1 Two protected Conservation Areas within the villages with listed buildings marked in blue on the site location map. These are the original hearts of Nether and Upper Poppleton, with listed buildings and strong protection against inappropriate building development. At present there are areas that have a potential to be developed but the aim of this policy is to preserve the woodland and green nature of the villages.⁹

5.2 Parts of the western edge of the village are designated as conservation areas, the character of which has a close relationship with the surrounding agricultural landscape and is clearly visible from the A59 and minor roads to the west of the village.

5.3 These retained policies make it clear that development plans should define the detailed boundaries of the Green Belt around York. The outer boundary is to be about 6 miles from York city centre and the inner one is to be defined to establish the long-term development limits that safeguard the special character and setting of the historic city.

⁹ See Appendix C the full declaration of the conservation areas, history, and noted features and buildings.

25 October 2016

5.4 The villages have a number of historic buildings which contribute positively to the character of the villages. In order to protect the historic character and open nature of the village and green belt it is important that their heritage value is conserved appropriately and in accordance with the Village Design Statement. Policy PNP 3 is worded to protect the open character of the village and green belt in relation to housing development within the village building boundary.

5.5 Some of these agricultural buildings are located within the conservation areas of Nether and Upper Poppleton which affords them special protection.

5.6 The villages have over the last 20 years experienced a significant amount of infilling on brown field sites at Poppleton Park, the King and Ellis garage and Challis nursery gardens. Some developments have increased pressure on the built up areas and could be considered as over-development and of poor design with increased parking issues. There is always a need to be aware of development which has the potential to increase pressure on land, resources, infrastructure and roads. An awareness of this increase in pressure should form part of development planning.

5.7 NPPF 126-141 refers to conservation and enhancement of the historic environment. All development must also take due account of national and international designation for landscape. While the landscape is generally protected by virtue of having Green Belt designation which gives special protection and enhancement of the historic setting of York, the detail of the boundary is not set by any higher tier policy

Conservation Area Policy PNP 3

All development and land use within the conservation areas must protect the open character and heritage assets of the villages as set out in the conservation areas 16 and 17(CYC references).

Heritage Assets

5.8 There are no particular additional policies for protecting the heritage assets of the parishes proposed in this plan. The existing National and Local policies are considered to provide sufficient protection. A statement from Historic England and the Local List which will be enshrined in the Local Plan eventually will cover important structure, spaces, buildings and features which are not listed nationally or internationally, but are important to the local communities for their local historical significance and association with well-known local people.

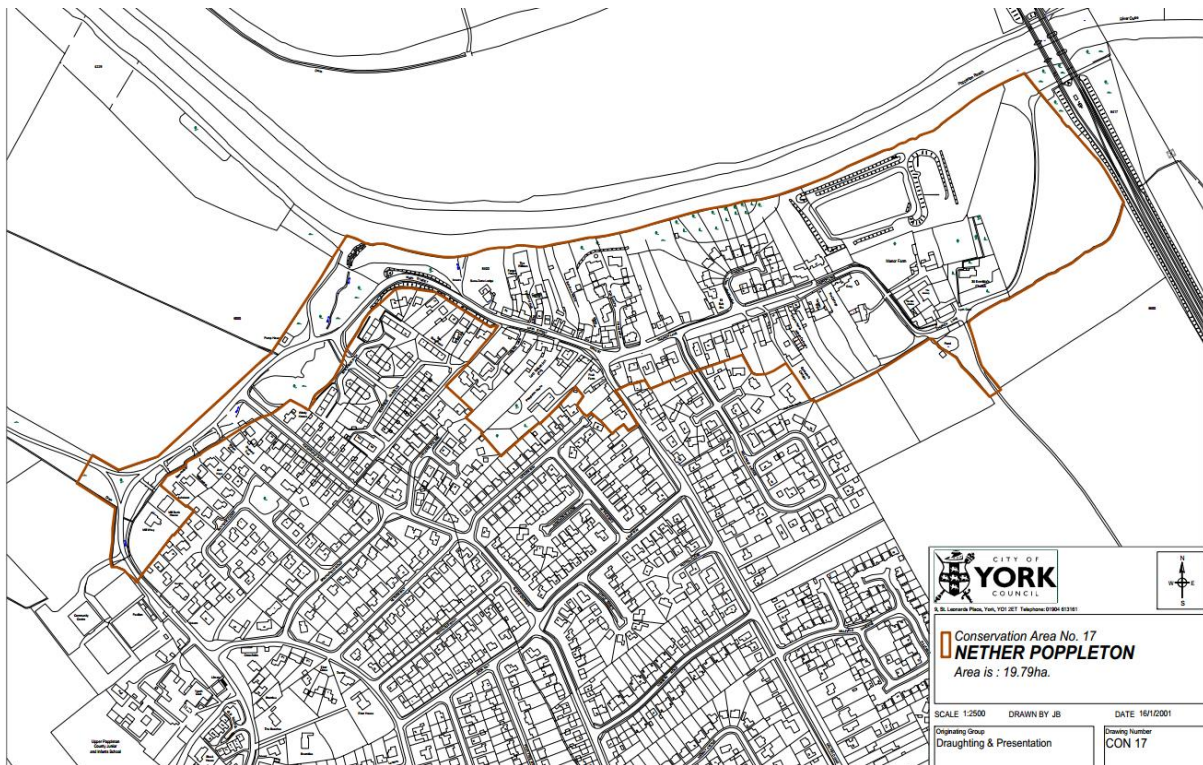
5.9 There is a list of Historic Assets within the villages of Upper and Nether Poppleton on the Historic England website (<http://www.historcengland.org.uk/listings/what-is-designation/local/local-designations/>.) Photographs of the following can be viewed at the above site.¹⁰

<i>Nether Poppleton</i>	<i>Upper Poppleton</i>
Kilburn House	Manor Farmhouse gate and railings
Barn at Manor Farm	Model Farm, Barn and Railings
Church of St Everilda's	Greenview
Tithe Barn (Prince Rupert's Barn)	Beechwood House
Dovecote at Manor Farm	Russett House
Gazebo North of Fox Garth	Priory House
Monument 1198194/11988389	Orchard House (1700-1732)
36 Church Lane circa c17	Boundary posts SE 5303 and SE 5336
Dodsworth Free school building	All hand water pumps in both villages
Old School House	

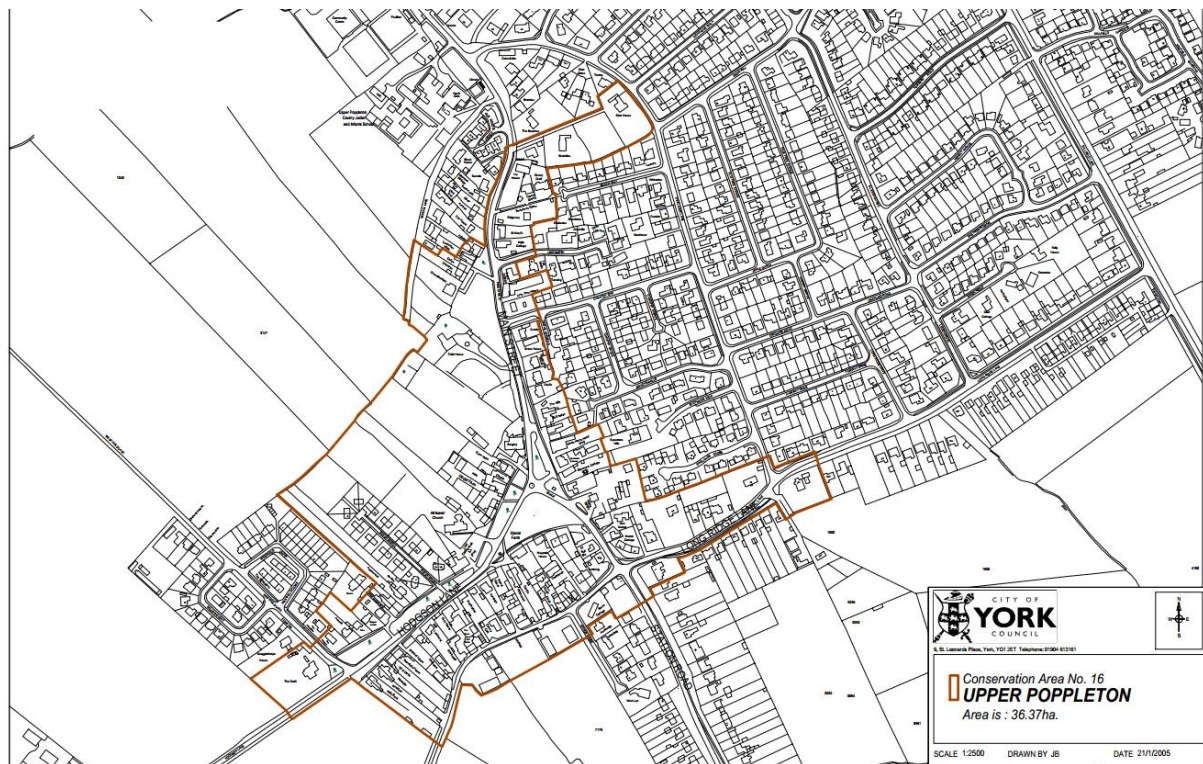
¹⁰ Local list adopted and held by York City Council through Alex Acomb

25 October 2016

Map reference figure 5 Site location map for Nether Poppleton Conservation area established in 2001



Map reference figure 6 Upper Poppleton Conservation area established and expanded in 2005



By permission of City of York Council

25 October 2016



18c FARM BUILDINGS WITHIN THE CONSERVATION AREA UPPER POPPLETON



NEW HOUSES WITHIN THE CONSERVATION AREA BLENDING INTO THE SURROUNDINGS



APPROPRIATE BARN CONVERSION IN NETHER POPPLETON

25 October 2016

Historic assets cont:

Over the past 20 years the History Society of Poppleton have researched and published a series of books outlining the history and assets of the village. The titles show the wide range of expertise and interest within the village community.¹¹

River Roads and Railways : The Story of Transport in Poppleton(1991) Michael Fife, Ian Routledge and John Perkins

Scholars, Schools and Staff of Poppleton (1993) by 10 authors , edited by Michael Fife

Georgian Poppleton (1994) by Prudence Bebb

Exploring the Poppletons -Nether and Upper (1998) Mark Jones and Michael Fife

The Public Houses of Poppleton (1999) Barrie Davies

One Hundred Years of Poppleton Children's Sports Day (2000) by Helen Mackman

Poppleton War Memorial soldiers of 1914-1918 war (2017) due

Village historic character and setting

History of Poppleton¹²

The Old English name "popel" probably means "pebble" and "tun" implies a non-forested landscape or hamlet farm. Thus Poppleton may have originated as "a farmstead on pebbly soil" (a reference to local glacial sands and gravels) or "by a pebbly bank"(higher land on the edge of the river).

"Nether" suggest this settlement as the one closer to the river. Which of the two Poppletons came first is open to debate, but Nether Poppleton is most likely to be the older.

History of Nether Poppleton

The earliest reference to Nether Poppleton is in a charter of Archbishop Oswald of 972. St Everilda's Church (only one other dedicated to this obscure 7C Saxon Saint is known) is mentioned in the Domesday Book. In 1088 St Everilda's and the manor of Nether Poppleton were given by Osbern de arches to St Mary's Abbey in York, an association which continued until the Dissolution. The moated site between the river and the present 18 C Manor House may well be the site of its medieval predecessor. Over 350 years ago, it is reputed that Prince Rupert quartered his troops in the Tithe Barn, before being defeated at Marston Moor. From its origins around the Church, the village developed westwards along Church Land and Main Street, where there was a ferry crossing. The village remained virtually unaltered until 20 C expansion as a commuter settlement. The present population is about 1530.

History of Upper Poppleton¹³

. The earliest reference to Upper Poppleton is in the Domesday Book recorded as a subsidiary land holder. The original manor house was probably sited close to the present house of that name. All Saints' Church was originally a "minster" church, thought to be of Norman beginnings, but was

¹¹ Series of books available from the History Society all priced at £3.00

¹² Taken from the City of York Conservation Sites Document

¹³ Taken from the City of York Conservation Sties Document

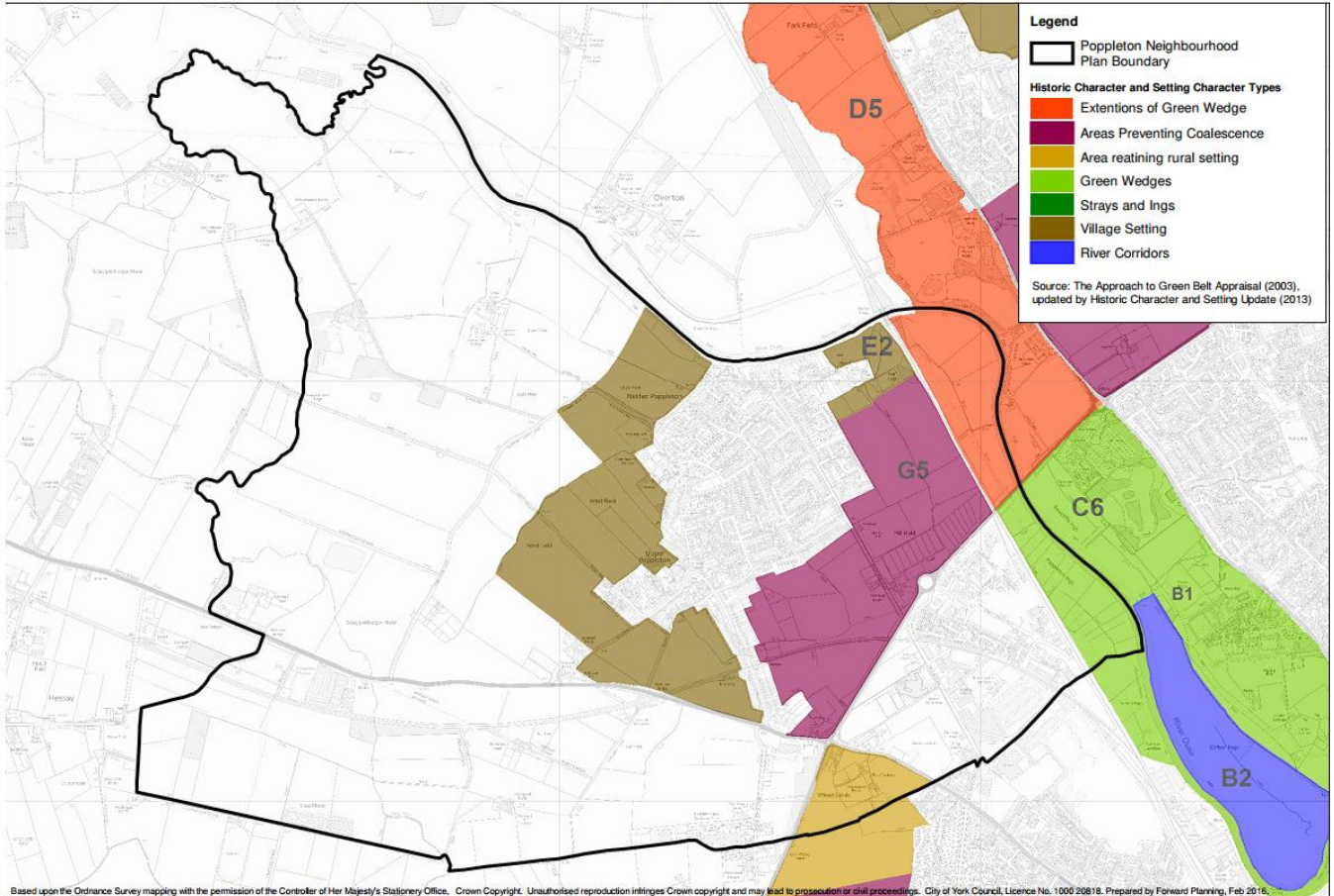
25 October 2016

rebuild in 1891. The railway came to Poppleton in 1848, later facilitating extensive 20C developments as a commuter settlement, the present population being about 1900 people.

The map provided by the City of York Council Planning Department (2016) shows how the historic character and setting of the villages is valued by Historic England. The area to prevent coalescence has been agreed with the City of York in the emerging Local Plan.

Historic Character and Setting Character Types within Poppleton Neighbourhood Plan Area

February 2016



25 October 2016

Village Design Statement

The Poppleton Village Design Statement was approved and adopted by the City of York Council in 2003. It has, since that time, informed all building within the villages' building limits line to ensure that the character, open aspect and style of housing development is consistent with the street scene, the material consideration of planning law and in keeping with the historic character of the villages. A full copy of the PVDS is attached as part of Appendix to the plan document. Before building takes place, all building contractors should be familiar with the PVDS document contents and planning restrictions.

5.10 The purpose of this policy is to secure high quality design and development without restraining economic development. Good quality design is a relatively low cost part of the development process, and the design phase of proposals in Poppleton must not be curtailed. Design quality and its subsequent execution are the most important parts of development within Poppleton villages designated area

5.11 Non-compliance with the Village Design Statement in these circumstances will be a reason for refusal. The design process should be explained within the Design and Access Statement to show how the resulting design has been produced taking into account the relevant sections of the PVDS. *Appendix B*

5.12 The Village Design Statement (PVDS) has clear guidelines on development of buildings within the Poppletons. Any dwelling must be well related in design, scale and siting to other buildings and landscape features and not be detrimental to existing living conditions.

5.13 The Settlement Limit of Poppleton villages was agreed in 1971 with the West Riding County Council, the District Council and the Parish Councils of Nether and Upper Poppleton. In 2003 the Poppleton Village Design Statements indicating that the Settlement Limit and the Green Belts limit were the same line, was accepted by the City of York Council. The Settlement Limit Line/Green Belt Line was confirmed in the Draft Local Plan (4th set of changes 2005) which is the current set of planning regulations for the City of York for all current development until a new Local Plan is inspected and adopted. The Neighbourhood Plan supports the guidelines as set out in the above document.(Map page 29)

5.14 The Map 2005 set the green belt around York till 2026 unless a new Local Plan was adopted

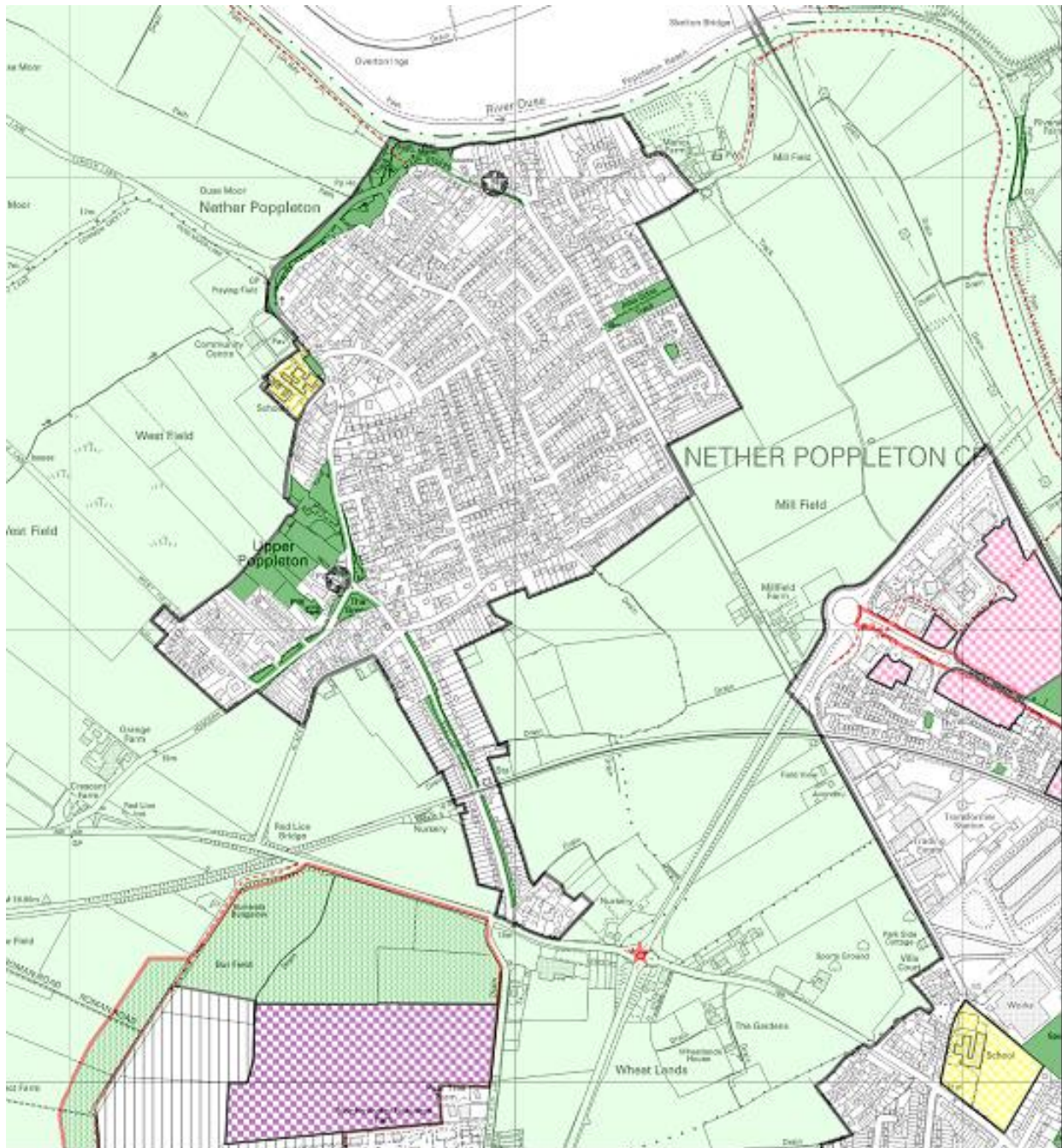
Village Design Statement PNP 4

All new developments within the settlement limits of the villages will be considered in relation to the guidelines in the Poppleton Village Design Statement (PVDS) as far as they are material to the proposal.

25 October 2016

Draft Local Plan Map Incorporating 4th set of changes. Development Control Local Plan (April 2005)

Used for all planning decisions up to and including July 2016



**CITY OF
YORK
COUNCIL**

**Draft Local Plan Incorporating the Fourth Set of Changes
Development Control Local Plan (April 2005)
PROPOSALS MAP**



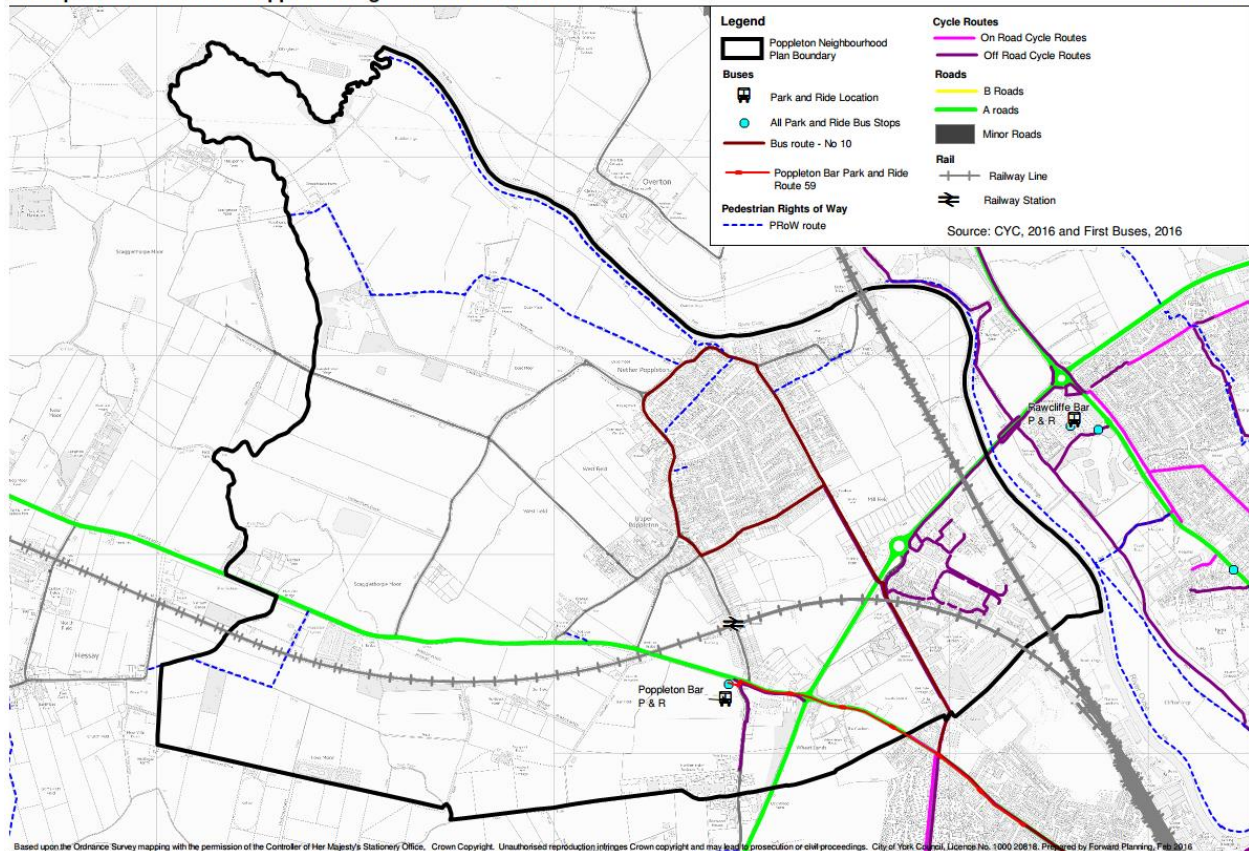
Leonard's Place, York, YO1 2ET
Phone: 01904 551550

Reproduced from the Ordnance Survey mapping with permission of Her Majesty's Stationary Office.
Crown Copyright. Unauthorised reproduction infringes Crown Copyright and may lead to prosecution or civil proceedings.
Drawn by City Development, City of York Council Licence number: LA92267L-2016

6 Transport Corridors

Transport Connections in Poppleton Neighbourhood Plan Area

February 2016



Map showing current major roads, trains, cycle tracks, bus routes and general connectivity of the Neighbourhood Plan area in 2016. Cycle and pedestrian routes outside the parish boundaries are not shown.

6.1 The area between Poppleton and York is also used heavily for transport purposes which is strategically necessary but in conflict with other purposes of the green belt such as settlement, separation, wildlife corridors and openness. Significant rail lines and roads cross this part of the parishes.

6.2 Currently Nether and Upper Poppleton are well connected to the city by rail links on the Harrogate to York line which may be upgraded to an electric line. Regular bus services are currently provided to the city and other suburbs via the number 10 route.

6.3 A park and ride facility has been built on green belt land within the designated area in the past. Improvements to the roundabout provision on the A 1237 have been completed in the last year (2015). At present the City of York Council have indicated that they have no plans to dual carriage the A1237 outer ring road.

6.4 A cycle track to the city from the village is incomplete at present. It is a shared pedestrian and cycle path for all travelling to Manor Academy from west and east. It is narrow and congested at key periods and needs to be reconstructed to meet with the traffic use involved. It encourages all in the village to use the cycle path into York. Millfield Business Park has an entrance for heavy haulage vehicles directly opposite to the pedestrian exit from Manor Academy. This heavy traffic use is a further reason for limiting access to the British Sugar Site on to Millfield Lane.

25 October 2016

6.5 Within the village there is a difficult three direction junction to be negotiated.(The T junction between Longridge Lane and Millfield Lane). It is hazardous particularly in the dark mornings of winter. Approximately 60% of students from the village and 30% of students coming from the east to the Academy currently use this shared narrow path. This Policy would seek to improve the present situation for cyclists by extending and widening the current provision to ensure safety for all within the village and approaches to Manor Academy.

6.6 Regular speed checks are carried out along this road. Vehicles are frequently monitored travelling in excess of the speed limit, as a result making it dangerous for cyclists.

6.7 NPPF 17 states that a set of core land-use planning principles should underpin both plan-making and decision taking. This can be achieved by actively managed patterns of growth to make the fullest possible use of public transport, walking and cycling and focus significant development in locations which are, or can be made, sustainable.

6.8 The policy PNP 5 is intended to provide instruction for cycle path improvement and reduce the incidence of cycle and vehicle traffic conflict. The cycle and pedestrian improvements on Millfield Lane must be provided in advance of, or coincidentally with, other transport infrastructure improvements within the Green Belt between Upper and Nether Poppleton and the built up area of the City of York.

6.9 NPPF 35: Create safe and secure layouts which minimise conflicts between traffic and cyclists or pedestrians.

6.10 Any further cycle path development which linked Poppleton to neighbouring villages, e.g. Hessay or Rufforth would be supported. The focus for cycling in the Neighbourhood Plan is to promote better health and well-being and sustainable transport for all residents.

6.11 Manor Academy staff and governors and the residents of the villages hope that developers at the Former British Sugar Site see the importance of linking cycle and pedestrian traffic to a sustainable network that provides for the secure transport connections for pupils and promotes public health by so doing.

6.12 Other potential building sites were noted in the Draft Local Plan. Some are on valuable agricultural green belt land and at present it is unclear if such developments will proceed. If in the future such developments were to take place then cycle path connections should be considered a major part of any planned development

6.13 In order that appropriate pedestrian and cycle construction becomes part of any development, it will be a requirement that within the Neighbourhood Plan area paths are wide enough to accommodate people and cycles. These shared spaces will be the responsibility of the developers.

Traffic Policy PNP 5

Improved and extended cycle and pedestrian access to and from the village in relation to Manor Academy, local villages and the City will be supported.

25 October 2016



THE CURRENT CYCLE PATH SHARE SPACED BETWEEN POPPLETON AND MANOR ACADEMY

25 October 2016

7 Housing development

Sites and circumstances

7.1.1 There are limited opportunities for significant housing development within the Poppleton Villages' robust heritage and conservation boundaries. Other sites include Former British Sugar Site, Longridge Lane Site and since 2016 emerging Local Plan, former Civil Service Site and Wyevale Garden Centre. Total housing number over the Neighbourhood Plan timescale will be in the region of 600 houses **within** the parish boundary with a further 900 immediately at the former British Sugar site. The indications from the emerging Local Plan (2016) suggests a target of 841 houses per annum in the York Unitary Authority area over a twenty year period.

Areas within the Poppleton Parish boundary of potential housing.

The area known as Blairgowrie is within the conservation area and the site is of special concern to English Heritage.

Response 238/14083 by English Heritage

"This site lies in the Upper Poppleton Conservation Area. When originally designated it is presumed that this open area was considered to make an important contribution to the character or appearance of the Conservation Area. Therefore one might assume that its' loss and subsequent development would result in harm to that part of the designated area. In view of the duty on the Council to preserve or enhance the character or appearance of its' Conservation areas, there will need to be some assessment of what contribution this plot makes to the character of the Conservation Area. If this area does make an important contribution, then the Plan would need to explain why its' loss and subsequent development is considered to be acceptable. If after undertaking this assessment, it is considered appropriate to allocate this area, development proposals would need to ensure that those elements which contributed to the significance of this area are not harmed."

(English Heritage objections to housing on Blairgowrie in Upper Poppleton sent to the City of York Council during the preferred options consultation 2013, 2014)

7.1.2 The Blairgowrie site is centrally situated in the conservation area, located within Upper Poppleton.

7.1.3 The Neighbourhood Planning Committee is mindful of the impact on the road infrastructure within the village that housing on the Blairgowrie site would have. The present location of the local doctors' surgery, shops, public houses and the Methodist Church make this a particular bottleneck for traffic. On occasions the public bus service is disrupted due to car parking on the roadside. Further development of housing in this area would exacerbate the situation.

7.1.4 The area provides a wildlife sanctuary and forms part of the green corridor within the village linking the agricultural fields to one of the village greens. The aerial photographs show an extensive array of mature deciduous trees that give a rural woodland atmosphere to the area.

7.1.5 This area should be developed appropriately in limited fashion bearing in mind the caveats and policies 6A,6b,6C,and 6D in the Neighbourhood Plan.

Housing Policy PNP 6 A

Housing proposals will be supported where they meet any of the following criteria:

- 1 The site is allocated on the land allocations plan for residential use as follows :
 - H1 Former British Sugar Site (ST1) (City of York reference)
(300 dwellings) within Poppleton
 - H2 Long Ridge Lane (2 dwellings)
 - H3 The Blairgowrie Site (replacement dwelling and outbuildings)
 - H4 Former Civil Service including the agricultural land (ST 2)(261)¹⁴
(Information received 18 July in preferred site options consultation).
- 2 The proposal is the subdivision of an existing dwelling or is a single infill dwelling within a domestic curtilage and in compliance with other planning policies.
- 3 The proposal is for the conversion of an existing building that is of some heritage value worthy of retention and is in sound structural condition. The building should be genuinely redundant and it can be demonstrated its loss will not generate demand for a replacement building in the future.
- 4 Any development within the village must be within the village settlement limit as shown within the VDS

Housing Policy PNP 6 B

The redevelopment of the buildings on the Blairgowrie site will only be permitted where it replaces the existing buildings of the same scale and to the same extent. It should maintain and enhance the character of the mature planting, landscaping, and the conservation area generally



Blairgowrie site with adjacent agricultural fields. Conservation area with all trees TPO

¹⁴ Numbers of houses to be agreed when outline planning is received

25 October 2016

7.2 Within the designated area of Nether and Upper Poppleton there are sites which vary in size and opportunity for development. The total number of houses built within the village designated area in the last twenty years area is 423. These have mainly been built on brownfield sites or as infill into extended garden areas.

7.3 Back-land development within the village is increasing the pressure on former green belt land, creating traffic issues as visitors to the property frequently park on the village verges and block exits. Back-land development also is increasingly creating over-shadowing, which affects the amount of natural light presently enjoyed by a neighbouring property resulting in a shadow being cast over that property.

7.4 Over-development as a definition in this Neighbourhood Plan refers to increased housing density which is out of character with the surrounding housing types, increases the density of housing on a plot in such a way as to have significant impact on amenities, space for gardening, car parking on site where access may be compromised and which could impact on neighbours, open recreational space, schools or rural ambience.¹⁵

Housing Policy PNP 6 C

Any proposal for subdivision of an existing site creating back-land development will only be permitted when it does not contravene the Neighbourhood Plan para 7.4 definition of over-development and does not over-shadow neighbouring properties.

7.5 The Former Sugar Beet brownfield site (ST1) is partially within Nether Poppleton. This plan supports the development of this site with a wide variety of housing types to meet the needs of York population expansion and which is in compliance with NPPF 56-68. The City of York describe this as a prime site for re-development to meet a significant housing need in this area.

7.6 The access to and from the site requires a great deal of attention. The whole site when completed will have 1100 houses which will generate significant extra traffic. The number of houses should not exceed this proposal. The main access to the site should be off the A59 Boroughbridge Road.

7.7 The developers of the former British Sugar Site and the City of York Planners are considering methods of controlling and slowing the traffic through the site. It is important to provide public transport to serve the residents.

NPPF 30 states that encouragement should be given to solutions which support reductions in greenhouse gas emissions and reduce congestion.

7.8 The developers of the Former British Sugar Site have already carried out an Environmental Impact Assessment (EIA) in relation to the proposed redevelopment of the site, and the Environmental Statement (ES) has been submitted to the Council in support of the planning application for their consideration. This includes an assessment of traffic impact and consideration given to the main entrance being from the A59 Boroughbridge Road. It is considered therefore that only minor egress should be onto Millfield Lane. (Cross reference to 10.4).

¹⁵ www.planningportal.gov.uk: Overdevelopment – an amount of development (e.g quantity of building or intensity of use) that is excessive in terms of demand on infrastructure and services or impact on local amenity and character.

25 October 2016

7.9 The developers of the Former British Sugar Site have been in constant dialogue with the Neighbourhood Plan Committee since the first pre-submission consultation. Agreement on landscaping, preservation of mature trees whenever possible and screening on Millfield Lane have been agreed in relation to the Parameter and Design principles. The Neighbourhood Plan also supports the development of brown field sites ahead of any other sites.

Housing Policy PNP 6 D

Housing on the former British Sugar Site (ST1 CYC H1 PNP) is supported with mixed housing types, amenities, outdoor sport and recreation facilities for the community and the main entrance is off the Boroughbridge Road.

7.10 The former Civil Services Sports field has been indicated on the latest Local Plan as one unit area and it is subject to a current planning application, but is actually two distinct parcels of land with two different functions and owners. While acknowledging that there is a need for housing within York, the latest numbers produced by the City of York Council in the consultation paper published July 2016 indicates that 841 houses per annum will meet the present trends in demographic data. It is proposed that the total number of houses on this site including the agricultural land will be 261¹⁶. When this figure is added to the British Sugar Site Development the total number of houses within this small area will be in the region of 1400 houses. This will significantly increase the impact on the road systems, school, doctors and other amenities and provisions within this section of the City of York and Poppleton boundary.

7.11 The only part of the site that may truly be considered as brownfield is the section where the original club house and tennis courts were built. The remainder of the sports field was always cultivated grassland. The second parcel of land has always been Grade 2 and Grade 3a agricultural land. Natural England has indicated that most versatile and valuable land should be protected.¹⁷

7.12 Discussions with Miller Homes, a prospective developer, indicate that the agricultural land which has been in production for over 100 years and is adjacent to Manor Academy, is planned for housing. During consultations there continues to be concern that more appropriate brown field sites and windfall sites are available. Miller Homes have agreed that the present hedgerow, trees and boundary hedges will be retained on the site to act as means of reducing noise pollution from the adjacent A59. The Building for Life 12¹⁸ principles should be applied to all planning on the former Civil Service Site.

7.13 Miller Homes are aware of the impact that any future development would have, if in close proximity to Manor Academy classrooms. Miller Homes have therefore agreed to a buffer zone including the access road through the site with landscaped screening to ensure that privacy is maintained. This is indicated on P 45. Millers have had discussions with the Academy leaders on how to ensure privacy and security for the pupils at the school.

Aerial photo illustrates two distinct land uses on the land to the left of the school buildings.

¹⁶ After consultation with Miller Homes the indication is that this number will be reduced to 261

¹⁷ Natural England <http://publications.naturalengland.org.uk/publication/35012>

¹⁸ See page 40 for details.

25 October 2016

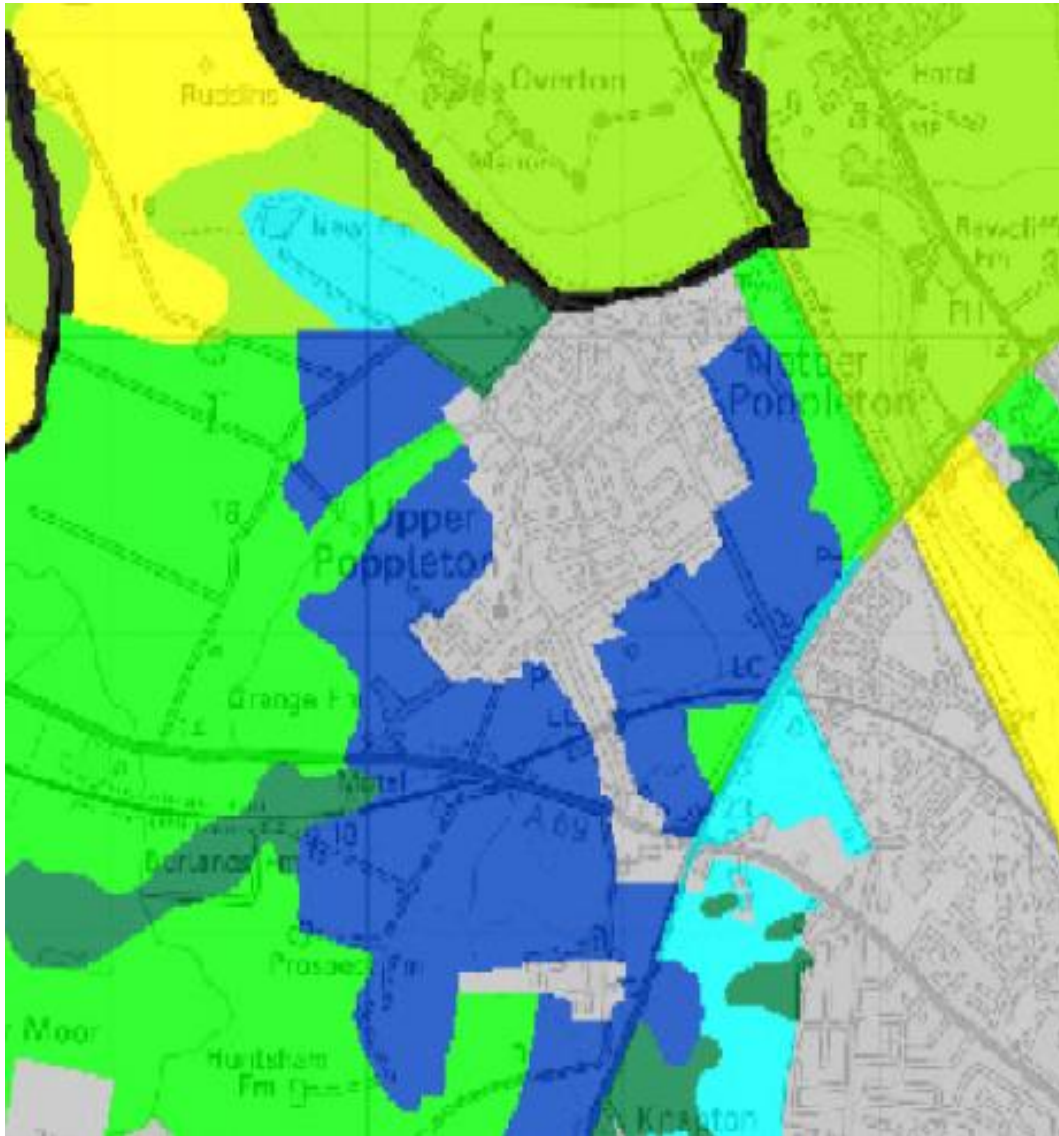


Aerial photo of the relationship of Manor Academy to the former Civil Service sports ground and agricultural field. Mature trees and hedgerows clearly visible. 261 houses proposed in the span of the Neighbourhood Plan.

Foreground shows the electricity sub-station adjacent to the former British Sugar site where 1100 houses are proposed over the 20 year span of the Neighbourhood Plan

25 October 2016

7.14 A further site known as Wheatland has been removed from the latest site allocations July 2016. The Neighbourhood Plan welcomes this removal as the area represent a significant break between the urban area of the City of York and the rural , historic character and setting of the villages of Nether and Upper Poppleton



Map Agricultural land use map provided by CYC under licence

Key Grey is Poppleton Village, Blue is grade 1 agricultural land, turquoise is grade 2 agricultural land.

Types and mix of housing

7.15 Proposals new dwelling should comply with relevant national and local policies for the delivery of a mix of housing types including affordable housing, older persons housing and appropriate dwelling size. Compliance with NPPF para 50 shows that mixed communities will be developed to reflect local demand.

7.16 Housing need identified in the City of York SHMA June 2016 draws the conclusions on the overall full objectively assessed need for housing over the 2012 -2032 period to be 841 dwellings per annum. However since 2012, 8000 houses have been built in the York area and considerable

25 October 2016

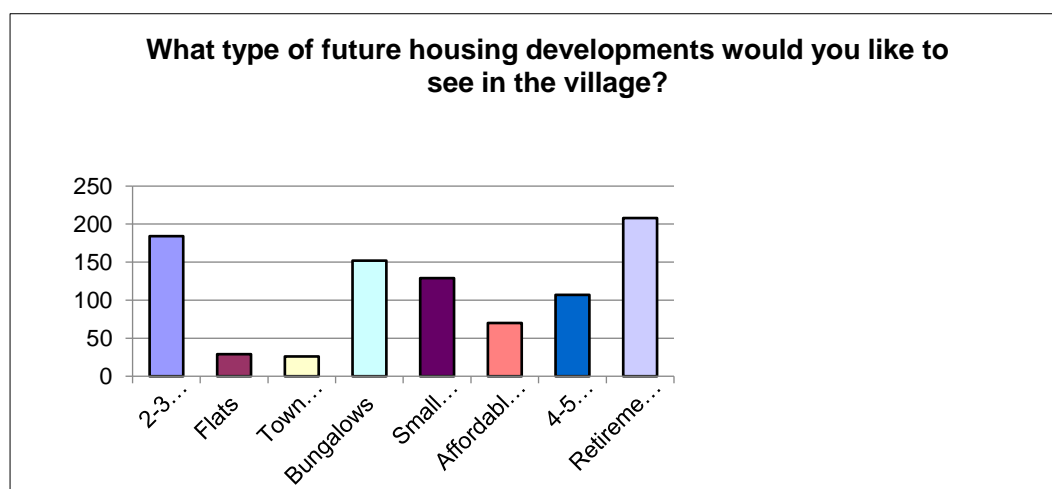
development have occurred in the Neighbouring District of Hambleton, Selby and the East Riding in North Yorkshire. These are all within the travel to work analysis provided in the Preferred Options Consultation document released on 18 July 2016. This further suggests that brownfield sites should be brought into use significantly before greenfield sites area considered.

New Infill housing orange roofs built in 1998. To the right infill houses built in 1990. Note the mixture of family homes and bungalows built in this area.

Extended gardens in evidence at the lower right corner. The land of the extended gardens was original green belt and the ancient hedgerows are clearly identified.



Response from 500 questionnaires regarding new housing to be built **within** the village.



25 October 2016

7.17 The Neighbourhood Plan requires developers to use Building for Life 12¹⁹ and to demonstrate the quality of their schemes through full and thorough assessment. Development in Poppleton Parishes should be exemplary and should ideally secure 12 out of 12 Greens as indicated below.

- **Connections** – Does the scheme integrate into the surroundings?
- **Facilities and Services** – Does the scheme provide (or is close to) community facilities?
- **Public Transport** – Does the scheme have good accessibility to public transport?
- **Meeting local housing need** – Does the development have a mix of housing types and tenures that suit local requirements?
- **Character** – Does the scheme create a place with locally inspired distinctive character?
- **Working with the site and its context** - Does the scheme take advantage of site characteristics e.g. Topography, Habitats etc?
- **Create well defined streets and spaces** – Do buildings enclose streets and spaces and turn corners well
- **Easy to find your way around** – Is the scheme designed to make it easy to find your way around?
- **Streets for all** – Are streets designed to encourage low vehicle speeds?
- **Car Parking** – Is resident and visitor parking sufficient and well integrated?
- **Public and private spaces** – Will public and private areas be clearly defined?
- **External storage and amenity** – Is there adequate external storage for bins, recycling and cycles?

8 Employment developments

Sites and circumstances

8.1 Currently there are three business parks within the designated area of Nether with Upper Poppleton and one small farm diversification business unit. They provide employment locally and have varying degrees of success in attracting business and clients. Much of the success has to do with ease of access to the sites, security of tenure and sufficient parking for employees and clients.

8.2 A good example is cited as Northminster Business Park where the site is screened by trees and blends with the rural environment. Clear notice boards indicate names and locations of businesses and there is a high level of satisfaction by all using these premises. The site is compact and has limited road access down a narrow lane. Expansion within the curtilage of this site would be acceptable. Further expansion would compromise the green belt.

¹⁹ Building for Life 12 The sign of a good place to live by David Birkbeck and Stefan Kruczkowski ISBN978-0-95760009 6-6

25 October 2016

8.3 Millfield Lane is a linear business park with small units employing 10 or less. It is located opposite to Manor Academy and the area is congested at peak hours with school traffic. It is considered by employers to be a convenient site. It has capacity for additional businesses in the current premises.

8.4 The experience of York Business Park trading estate, has shown that business and houses may not always be a good mix. It creates traffic congestion, road side parking and difficult egress onto the A1237 Ring Road at peak times. It is considered that only a minor access to the Former British Sugar site should be from Millfield Lane to prevent vehicular traffic from the Former Sugar Site using the Millfield junction as a means of avoiding the main arterial road.

8.5 In order to preserve the rural aspect of any development on Millfield Lane, it is considered important to preserve the hedgerows, trees, shrubs and daffodils that have been part of the roadside environment. Currently this green vista provides a screen around the former British Sugar site from adjacent housing. It would be the wish of the neighbourhood plan that existing planting of trees shrubs and hedgerows is preserved to continue the rural setting and habitat for wildlife.

8.6 York Business Park is a site that was opened for development in 2000 and currently advertises over 14 acres of unoccupied brownfield site for business.

8.7 Some of the undeveloped area was noted by CYC as a Site of Interest for Nature Conservation (SINC). This designation was altered in 2015 to allow further business development to take place as shown on the map.

8.8 York Business Park is adjacent to a housing development Poppleton Park which has 200 houses. There is the potential to expand sections of this site either for further business premises or housing. There is onsite shop/petrol station, recreational facilities, a good cycle network and a recently completed care facility for the elderly. Currently the City of York has not designated the York Business Park brownfield for anything other than employment. The change of use to C2 residential land would be supported by the Parish Council if a suitable proposal came forward and was supported by the City of York Planning.

8.9 A care home for the elderly was built in York Business Park in 2014 and there are vacant sites adjacent to this area. Housing would be supported as it would give the residents of the care home a more integrated community feel. At present the care home site is surrounded by car retail outlets.

8.10 At the time of developing the Neighbourhood Plan there is also a proposal for two further developments on brownfield sites that were previously SINCS. One is opposite to the care home and will be a car retail outlet and work shop and the second is a car sales area and workshop to be built adjacent to Bannatyne's Health Centre and Spa.

8.11 Whilst both are supported, as employment was the key function of this area, it should be noted that there exists at the present time a critical shortage of parking facilities for cars. There is no bus route round the Business Park so most employees of the 70 businesses arrive by car. Currently on a daily basis parking occurs on cycle paths, pavements and fire roads and makes it difficult for traffic to enter and exit the site. Evidence would suggest that at the present time there is a shortage of around 100 car parking spaces.

Business and Employment Policy PNP 7A

Where new business development takes place on Business Parks there must be sufficient parking for employees and customers on site.

25 October 2016

Typical situation on York Business Park. The cars are parked on the cycle path and block the recess for the post box



8.12 The site shown on the land allocations map as E2 (The Poppleton Wyevale Garden Centre) is from the draft local plan (2014) and allocated for employment use for research and development, light industrial, storage and distribution. The site was evaluated through the Site Selection Process and was submitted by the landowner through due process.

8.13 The current E2 site is a garden centre/nursery and is extremely well supported by local people and visitors to York. The premises have been a garden centre for over 30 years and although ownership has changed, only sympathetic expansion has taken place. It still has the original open and green format. It would be the wish of local residents that it is retained in its present format and situation. It has been sympathetically landscaped and adds to the rural setting.

8.14 E2 is adjacent to the new Park and Ride provision known as Poppleton Bar which provides a regular bus service to the centre of the City. The Poppleton Bar Park and Ride Site was built on green belt land and village common land. The Village has accepted this development as a means of reducing congestion from cars to the city. For the most part the buses are electrically powered thus reducing emissions in the rural environment.

8.15 The landscaping around the Park and Ride Scheme as currently provided is insufficient to screen the area adequately. It is hoped that the birdlife and other wild life will return in the future when the habitat is suitable.

8.16 The Garden Centre site failed the criteria for housing as it is considered to be in the Green Belt, has poor access to schools, shops and amenities, and would create an isolated community with access to the village over a busy main road thus making it dangerous for children to access to secondary and primary schooling.

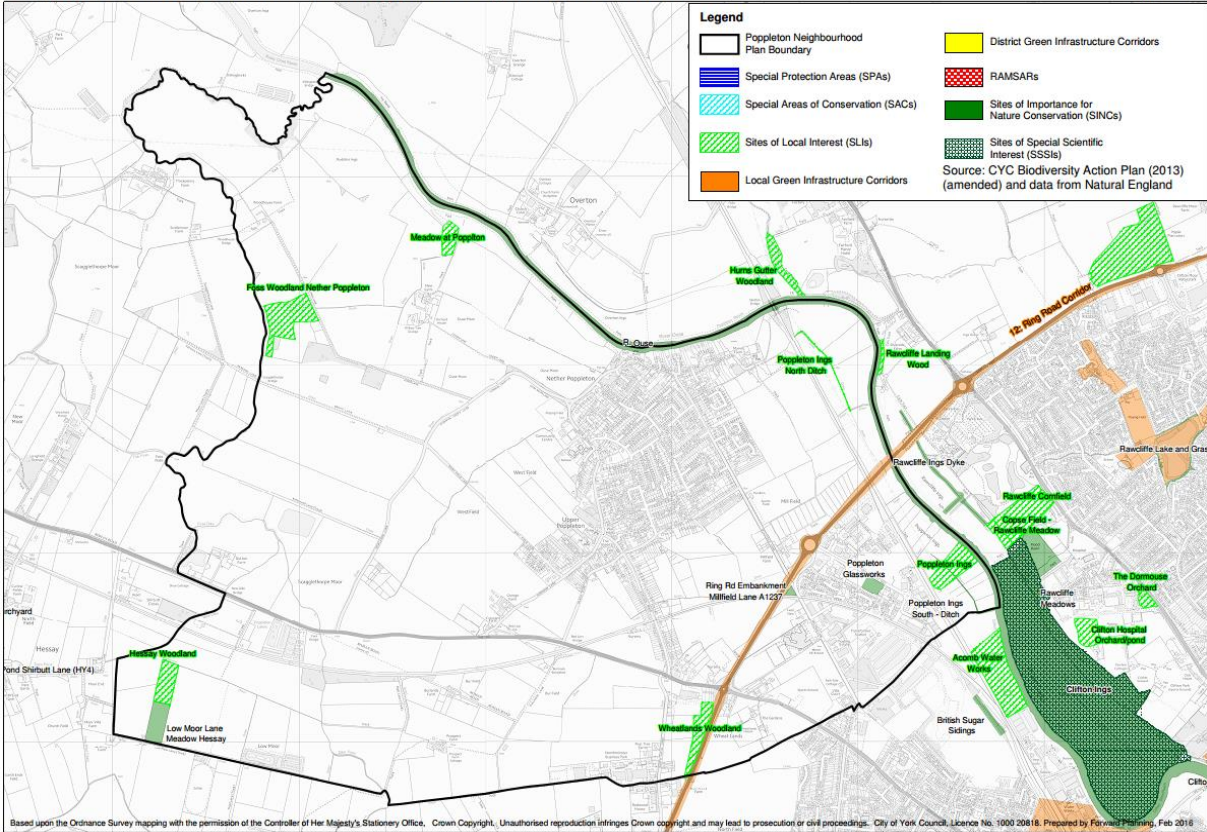
Business and Employment Policy PNP 7 B

Employment uses at E2 will be permitted but limited to redevelopment on the footprint and height of the current building in order to preserve the open character of the Green Belt.

Map indicating glassworks area that was never developed and associated conservation sites

Designated Nature Conservation Sites in Poppleton Neighbourhood Plan Area

August 2016



Map provided by City of York Council with names as per designation.

25 October 2016

9 Education sites

9.1 Land allocated for education expansion shown as ED 1 on the Land Allocations Plan will be safeguarded for this use for the duration of the plan. The current Manor Academy student roll number is 1023 although only planned for 1000. It is envisaged over the life of this Neighbourhood Plan that there will be a requirement for more places, and expansion of the current school buildings.

9.2 At the present time there is no 16-18 provision on the North West side of the City of York. The nearest provision is either at Tadcaster Grammar 10 miles to the west, Easingwold 10 miles to the north or York College 5 miles through the centre of the city. Given that sustainability suggests that there should be a reduction in impact of pollution through transport it is envisaged that provision of 16-18 education would be most suitable close to the present provision.

9.3 Since there is a proposal for 1100 houses on the Former British Sugar Site (ST1), there is also a requirement for a Primary School. If this could be developed in close partnership with and proximity to the Academy, it would be a sustainable model of educational development for a prolonged period. This is supported by the City of York Planning as the land was identified for educational open space under policy G15 New Open Space Provision.(Draft Local Plan 2014)

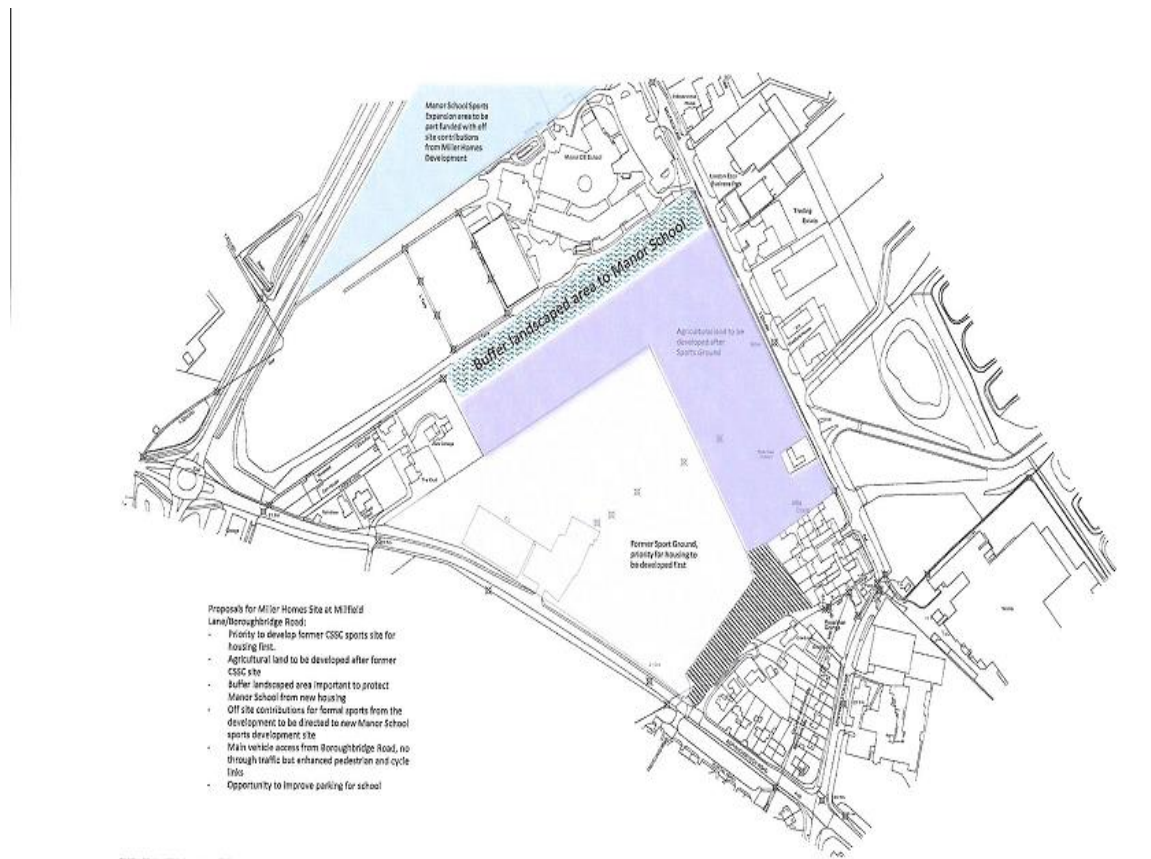
9.4 There has been extensive dialogue with the Principal of the Academy, the Governors and Miller Homes the developer. Agreement between the developer and the Governors has been reached to allow the school to have privacy, by means of a buffer zone (indicated on the sites location map in yellow), from intrusion by any buildings that might be developed close to the school.

9.5 The Academy has purchased from the City of York an area of land immediately adjacent to the ring road, A1237. This will allow the Academy to expand the playing fields and community activity as illustrated in Appendix B. This will also allow expansion of school buildings within the curtilage of the current building line. There will be no further development in the greenbelt area and privacy and separation between the school and the neighbouring development is assured for the duration of this plan.

Land for future playing field development between the school and the ring road.



25 October 2016



Buffer zone to protect privacy indicated on the photo above as land to the left of the school at present agricultural grade 2 land.

Figure Miller Homes land allocation adjacent to the school buffer zone agree (see consultation documentation) 8B illustrative map

Education Policy PNP 8 A
Site Ed1 on the land allocation plan will be safeguarded for future school playing field, allotments and woodland expansion.
Education Policy PNP 8 B
A buffer zone on the grade 2 agricultural land to the east of the school will be safeguarded, landscaped and planted to ensure that adequate separation and privacy is maintained between the school, the agricultural field, and any future housing development that might occur.

9.6 Preschool education facilities exist within the village limits in a building on the heritage list, the Dodsworth Hall. This provides good facilities for preschool children, There is also a preschool facility at the York Business Park which is convenient for many employees on the park. At the time of development of the Neighbourhood Plan Muddy Boots, a preschool for children is being relocated from the former Manor School which was within York City Boundary to new premises which are situated within Upper Poppleton in a former farmhouse. Muddy Boots has recently received planning permission to transfer to the new facilities with capacity increasing to 90 children.

25 October 2016

9.7 Concerns have been raised about the access onto the busy A 59. The Neighbourhood Plan Committee has been assured by the CYC planners that all traffic movements have been considered. The junction is to be splayed to allow good vision onto the road and passing places on the access road to Muddy Boots will ensure that there is no traffic build up backing onto the main road.

9.8 It is also noted that a new McDonald facility which applied for retrospective planning to accommodate a greater height will now overlook the playing area of the new Muddy Boots facility. There are again concerns by the Neighbourhood Plan Committee that intrusive visual access is now an unforeseen issue onto the children's play area.

10 Community Facilities

10.1 Land allocated for recreational use shown on the Land Allocations Plan as R1 shall be reserved for use as a recreational area, probably a cricket pitch and outfield playing area. Small scale development for a pavilion will be acceptable without undermining the open character of the Green Belt.

10.2 The villages are fortunate to have a good selection of clubs and amenities for many activities. There are two village halls, a community centre, and a Tithe Barn. There are vibrant bowls, football and tennis clubs. There is no cricket club or facility and villagers have indicated that this would be a good use of site R1 adjacent to the junior football field.

10.3 A steering group has been formed and discussion taken place with York City Council which currently owns the land about acquiring site R1 for the purposes of developing a cricket field or additional sports fields. The lack of cricket facilities in many schools means that the nearest cricket clubs to Poppleton are unable to cater for the number of juniors wanting to play. If cricket is not the major sport on the field it will be used as a further recreational space to provide a sports venue for the village.

10.4 During the pre-submission consultation a committee was formed to investigate the development of a new playing area for children adjacent to the Community Centre. This has been supported by both Parish Councils and has been highlighted during the pre-consultation period of this plan. There is currently a small area suitable for young children up to the age of 10 and it is extensively used at the end of the school day. It is felt that it is inadequate for children of all ages.

10.5 The land falls within the Community Centre grounds which were leased from the City of York Council in 1996 on a 99 year lease. The grounds are well maintained and secure and add to the open green aspect of the villages. The policy PNP 9B seeks to secure the land for future generations to enjoy, and promote healthy living and environmental sustainability.

Community Facilities Policy PNP 9 A
The land adjacent to the Poppleton Tigers Junior Soccer Pitch shown as R1 on the Land Allocations Plan will be reserved for recreational open space to provide a sports venue for the village.
Community Facilities Policy PNP 9 B
Land adjacent to the Community Centre should be developed as a play area for children of all ages. (R2)

25 October 2016

11 Environment

NPPF 109 The planning system should contribute to and enhance the natural and local environment by:

- *Protecting and enhancing valued landscapes, geological conservation interests and soils;*
- *Recognising the wider benefits of ecosystems services;*
- *Minimising impact on biodiversity and providing net gains in biodiversity where possible, contributing to the Government's commitment to halt the overall decline in biodiversity, including establishing coherent ecological networks that are more resilient to current and future pressures;*
- *Preventing both new and existing development from contributing to or being put at unacceptable risk from, or being adversely affected by, unacceptable levels of soil, air, water or noise pollution or land instability and*
- *Remediating and mitigating despoiled, degraded, derelict and contaminated and unstable land where appropriate.*

11.1 Protecting and enhancing the rural landscape and natural environment is important. There is strong support in the community to work with other agencies in the preservation of woodland, hedgerows, and the promotion of biodiversity, including wetlands and wildlife corridors. Currently there is a wooded area known as Wheatland's Woodland with permitted access through privately owned farmland for public use situated parallel to the A 1237 and Northfield Lane which is well used by the local community.

11.2 There are several footpaths along the river bank, one of which allows villagers to walk 5 miles to the next village of Moor Monkton.

11.3 The Millennium Green is managed by a Trust and financially supported by the Nether and Upper Poppleton Parish Council. It is protected for the future and provides a wild life sanctuary to many migrant birds, as well as local wild fowl. The Wildlife Area surrounding the ancient farm pond is particularly attractive to many young villagers and families.

11.4 Adjacent to the above two areas are paddocks within the Green Belt which are designated agricultural land. These paddocks are adjacent to the conservation area and it would be hoped to keep them as rural areas for the duration of this plan.

11.5 The Diamond Jubilee walk along the "Ings" to the York Business Park was developed in conjunction with the City of York and has provided a good walking opportunity for many villagers.

11.6 The policies PNP10A 10B, seek protection for those areas and paddocks not covered by the conservation areas. The surrounding agricultural land with ancient hedgerows provides a breeding ground for a wide variety of native bird species.

11.7 In the Conservation areas all trees are protected. There are a number of individual TPOs on specific trees within the villages. It would be essential to replace trees removed due to disease or for safety issues with indigenous trees. The policy 10A reflects this need for continuous replacement of valuable trees to the rural landscape.

11.8 A woodland area known as Warren Lea close to the riverbank has been extensively replanted with low level bushes and shrubs to encourage an even wider range of native bird life to the area.

25 October 2016

11.9 The key issue here is that distinctive rural landscape, settlement pattern, historical assets, natural environment and biodiversity of the Parish are protected and enhanced by the Neighbourhood Plan, whilst meeting the need for sustainable development. In promoting Healthy Lifestyles the Community considers that these green spaces, woodlands, footpaths, bridle paths and safe cycling areas are important to the Core Strategy of the National Planning Policy Framework.

11.10 There are currently a number of woodland recreational areas that may be reached by cycle, on foot or by horseback which provide an experience to travel between villages in the outer York area. It is hoped to maintain these paths for the future and restrict development that might reduce this amenity. The woodland areas include Wheatland's Woodland, Warren Lea and the riverbank leading to Moor Monkton.

11.11 During the consultation period for the draft Local Plan in 2013-2014 the village settlement boundary line was changed. There is also a Green Belt line that is proposed by COYC in the draft Local Plan which would indicate a lack of congruity between the settlement limit and green belt boundary lines. In 1992 an enquiry in front of a Planning Inspector (Mr J R Sheppherd. BSc, M.Phil.,FRICS.,FRTPI.) upheld the view that the settlement limit and the green belt should coincide.

11.12 The residents who have the extended gardens recognise that it is green belt land and may be used for meadow, pasture, orchard and grassland to maintain the biodiversity of the area. No permanent buildings are permitted within greenbelt land.

11.13 NPPF 114 indicates that Local Plans should plan positively for the creation, protection, enhancement and management of networks of biodiversity and green infrastructure.

11.14 Hedgerows have an important role in providing a natural habitat for native and rare birds as well as sustaining biodiversity. They also provide a valuable windbreak to prevent soil erosion of the valuable grade 1 Agricultural Land that surround the villages. When soil erosion takes place it incurs an additional expense for the farming community as the area has to be reseeded if a mature crop is to be harvested.

Environmental Policy PNP 10 A

Woodland areas will be protected and managed to maintain the habitat for wild life to sustain biodiversity in conformity with NPPF 109-125. Forestry work on trees covered by TPOs in Poppleton shall only be carried out following planning applications and approval by CYC Ecology Department. Where a tree or trees are removed due to disease or for safety reason a replacement should be planted on or near the original position.

Environmental Policy PNP 10 B

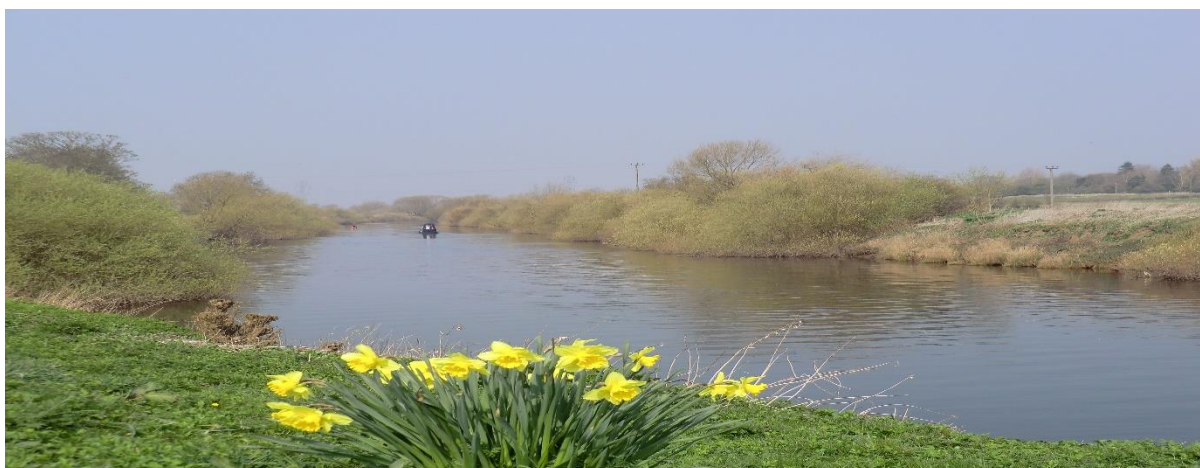
All the hedgerows within the villages and Neighbourhood Plan boundary play a vital part in assisting breeding areas for wildlife and will be protected. "Countryside Hedges" as defined under Hedgerow Regulations²⁰ 1997 and any deemed to be "important hedgerows" will require planning consent for their removal as approved by CYC Ecology Department. In Poppleton this includes former field boundary hedges.

²⁰ Hedgerow regulations (1997) no 116

25 October 2016



Woodland walks that provide environmental protection for birds, and other wild life.



River Bank walks from the villages to Nun Monkton and back through agricultural landscape



Millennium Green providing a space to breathe in the countryside within the village.

25 October 2016

12. Climate Change and Renewable Energy

12.1 It is evident from the proposed number of houses to be developed on the British Sugar Site that management of run-off from precipitation is a key issue.

12.2 When the recent Park and Ride Scheme was being developed an underground water holding tank was installed underground to collect flood waters and release them at a moderate rate into the River Ouse.

12.3 The River Ouse has the largest drainage basin system of any river in England. The precipitation rate on the Dales is high and in the event of heavy prolonged rainfall or sudden snow melt in winter the result in York is high levels of flooding which are frequently televised.

12.4 The need to ensure that building does not take place that will endanger the historic City of York is of high priority in this Neighbourhood Plan. A full environmental impact survey should be a requirement of any residential, business, or commercial development taking account of groundwater levels.

12.5 Given the need for sustainable renewable energy it would be proposed in this development plan that, with the exception of the Conservation Areas, all new building should be required to consider having solar photovoltaics to capture energy. Economic sense dictates that any development already connected to the National Grid could generate sufficient power to run appliances and lighting.

12.6 Flooding is not an issue for the present houses in the village as most were built above the 100 year flood line. However large scale housing development with non-porous surfaces present an immediate danger to the infrastructure within the City of York. Millers have indicated in their latest plan that a subterranean water holding area will be part of the new design for the development of the Former Civil Service Site.

12.7 In 2000 when the development of Rawcliffe and Clifton Moor was at its peak the highest level of flooding was recorded in York. The 'ings' provide a vital flood defence allowing water to spill out over the agricultural landscape and act as natural storage areas.

12.8 The Plan supports new housing that complies with or exceeds the requirements of Building Regulations in respect of the conservation of energy and use of renewable technology.

PNP 11 Climate Change and Renewable Energy

Any development or new build, (with particular reference to large scale housing developments such as former British Sugar Site) should comply with or exceed the Building Regulations with regard to energy conservation and use of renewable energy technology and should consider the following :- harvesting of rain water and storm run-off, grey water recycling, porous surface provision wherever appropriate, solar photovoltaics for energy capture and high standard insulation of floors, walls, and roofs to reduce energy consumption.²¹

²¹ The Council Renewable Energy Study (2014) undertaken by AMEC.

25 October 2016

13 Mineral Extraction and Waste Management

13.1 The Nether and Upper Poppleton Neighbourhood Plan acknowledges that the City of York Council as a unitary authority is also a waste and minerals planning authority.

This responsibility involves identifying all waste arising from all sources in the area and requirements for minerals, including aggregates and how these will be sourced.

The Municipal Waste Management Strategy for the City of York and North Yorkshire 2006 – 2026 and subsequent strategies highlight the need to develop planning policies relating to waste.

13.2 Minerals resource mapping undertaken by the British Geological Survey for North Yorkshire identifies broad areas of potential reserves in York for several types of minerals resources.

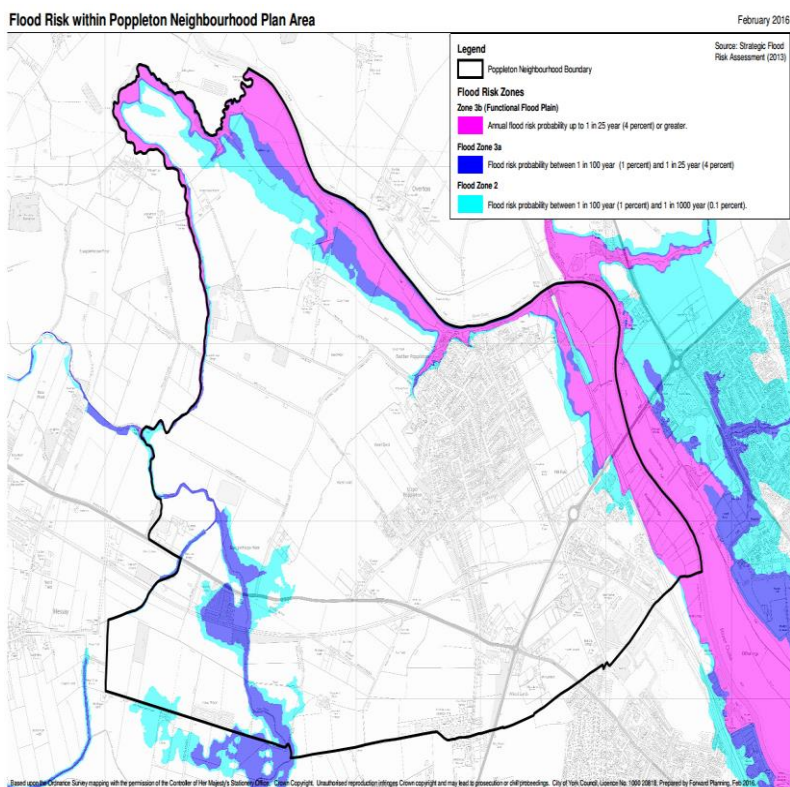
13.3 The area immediately upstream from the proposed Dutton Farm extraction as the allocation was included in the Preferred Options Draft of the Mineral and Waste Joint Plan and has not yet been adopted. The area is subject to flooding as the map below indicates.

13.4 There are a number of commercial fishing ponds that lie upstream from the potential site of Mineral extraction. The Neighbourhood Plan Committee are anxious that this natural area is not impacted in anyway either by extraction or subsequent infill when the extraction period, should extraction recommence or be permitted by the City Council.

13.5 Flood waters are an issues for the City of York. The Foss Dyke which form the Parish Boundary, is adjacent to the proposed extraction pit at Dutton Farm. It would be hoped that the City Planners take all this into consideration before allowing further extraction.

PNP 12 Mineral Extraction and Waste

The Neighbourhood Plan would seek to ensure that any exploration or excavation carried out would be followed by permanent re-instatement and restoration of the Green Belt. Indigenous tree planting and landscaping to the area should help to re-establish wild life habitats.



Electronic copies of all documents relating to this Neighbourhood Plan are available at www.plan4poppleton.co.uk

14 Site Allocation and selection

Site Allocation and selection is included in the Environmental Report and as an Appendix 1 to this document. It is available as a download on the www.plan4poppleton.co.uk website

Acknowledgements

The Neighbourhood Plan Committee is grateful to the consultants Tom Woof BEM MRTPI and Alex White BSc, MSc AIEMA for their assistance in producing this Plan.

The Neighbourhood Plan Committee would also like to acknowledge the help and support they received from Robert Bryan BA Hons DipTP MRTPI during the Health Check.

The funding for this work has in the main has been received from Locality and MY Community both government sponsored bodies that have been granted funding.

Deb Appleby and Emma Crickley, at Locality an organisation which assists communities to achieve Neighbourhood Plans to ensure that the right houses are built in the right areas with the correct level of amenities and transport links.

Hutton Peach who designed and assisted and supported the website development for the Neighbourhood Plan including the email address system.

Support has also been most welcome from Julian Sturdy MP, Cllrs Chris Steward and Ian Gillies.

25 October 2016

Finally the group have received advice and assistance from the City of York Council Neighbourhood Planning team (Alison Cooke, Caroline Strudwick, Rebecca Harrison, Martin Grainger and Rachel Masefield.)

25 October 2016

Appendix A

Formal letters and notification of designated area

FOREWORD

Letter from Parish Chairmen, regarding the Neighbourhood Plan at the pre-submission consultation period 11 May -1 July 2016

7 May 2016

Dear Resident of Poppleton

We are pleased to present the Poppleton Neighbourhood Plan. This has been promoted by Nether Poppleton Parish with Upper Poppleton Parish and has been prepared by a group of parish Councillors with the assistance of planning consultants Tom Woof BEM MRTPI., and Alex White BSc. MSc. AIEMA.

This is the second time the plan is out for pre-submission consultation as the lack of a Local Plan and Strategic Environmental Assessment meant that the Neighbourhood Plan has had to go through a scoping process and the attached environmental report has been produced from the evidence collected at that time.

This is very much **YOUR 2016-2036** Neighbourhood Plan. It is an expression of your wishes and is based on what you have told us over recent months through the events we have been running. It reflects the needs and aspirations of our community and gives effect to the views, opinions and information you have provided on how you wish to see the parishes and village of Poppleton develop over the next 20 years.

Please read the plan at www.plan4poppleton and pass any comment back to the plan committee at: info@plan4poppleton.co.uk.

or visit the exhibition in the library and leave your comments in the box provided there.

It is imperative that we have all your opinion and responses by **1 July 2016** so that we can present the final submission to the City of York Council for Examination by an external auditor.

We appreciate that your time is valuable and we know that for us your opinion on this plan really does matter to all the residents of Nether and Upper Poppleton.

You will all have the final say on whether the plan is adopted or not in a referendum vote in Autumn or Winter 2016. At that time 50% of all eligible voters who vote must give a positive approval for it to become adopted as the plan for Poppleton for the next 20 years.

Yours sincerely

Peter Powell Chairman of Nether Poppleton Parish Council

Stuart Robson Chairman of Upper Poppleton Parish Council

25 October 2016

The Neighbourhood Plan Group comprises Edie Jones, Vivien Crabb, Kathie Brydson, Roper Langford, Peter Powell and Don Simpson.

The following notice was distributed on 10 notice boards around the village and emailed to 540 villagers who left email address, as well as to all the statutory bodies, and business in the area

POPPLETON NEIGHBOURHOOD PLAN 2016

Town and Country Planning, Neighbourhood Planning (General) Regulations 14 (2012)

NOTICE OF NEIGHBOURHOOD DEVELOPMENT PLAN PROPOSALS

You may remember being contacted in November 2014 by the Neighbourhood Plan Committee asking for your views on the village and the things that you felt made it special. We then had a pre-submission consultation in 2015 and you told us your thoughts on the plan. The plan was also featured at a public display/discussion at the Village Sports Day on 25 May 2015. The Neighbourhood Plan has since been revised taking into account

- Your views and comments
- Requirements and suggestions from City of York Planning Department Officers, including a Strategic Environmental Assessment, following a prolonged series of meetings.

As a result of these revisions we would like to hear your views on the amended proposals as part of the **2nd pre-submission consultation 2016**.

Consultation Period : 8 May 2016- 1 July 2016

WHERE : The latest version of the Neighbourhood Plan, Environmental Report and Comment forms can be viewed :- Electronically www.plan4poppleton.co.uk website.

Paper copies at Poppleton Library, Lemon Tree Café, Community Centre Café, Doctor and Dentist Surgeries

On request an electronic copy pdf file can be sent to your email.

How to make representation: Copies of the response form:

Down load from our website www.plan4poppleton.co.uk

Paper copies at the above location

Please send completed forms via email to info@plan4poppleton.co.uk

or by sending the completed form to the Clerk to the Parish Councils:

Mr James Mackman, 39 Calder Avenue, Nether Poppleton, York YO26 6RG

or Neighbourhood Plan Committee, 32 Midway Avenue Nether Poppleton YO26 6NT

25 October 2016

The date by which any representations must be received is not less than 6 weeks from the date of this notice (the date of first publicity of the Proposal)

ROADMAP TO THE DEVELOPMENT OF THE NEIGHBOURHOOD PLAN

The process and timescale of developing this Neighbourhood Plan so far.

2014 JUNE	Initial Questionnaire asking the people of Poppleton if they wanted a Neighbourhood Plan to be developed. Formal representation to the City of York requesting to be a Designated Area for both parishes to work together
SEPTEMBER	Questionnaires delivered throughout the village to gauge response to land allocations for housing development and other land issues related to the designed area.
OCTOBER	City agrees that the area can be designated for Neighbourhood Planning Purposes.
OCTOBER	Local Plan rejected by City of York Council as the housing numbers were neither appropriate nor accurate.
OCTOBER -JANURARY 2015	Meetings and discussion to develop a pre-submission consultation on the plan based on response to the questionnaires.
2015 JANUARY – MARCH	PRESUBMISSION CONSULTATION
MARCH APRIL	Consultation report written together with Basic Conditions Statement and environmental Assessment
AUGUST	Preliminary Inspection undertaken – Health Check
SEPTEMBER	Historic England and City of York Planners - a full Strategic Environmental Assessment
OCTOBER	Newsletters informing residents of potential changes due to SEA
NOVEMBER	Locality assist Neighbourhood Plan Group with preparation of a scoping Report and its circulation for consultation with statutory bodies
DECEMBER	Scoping completed SEA consultant employed
2016 JANUARY	Site Assessment report repeated using scoring method advised by City of York Planners in order to correspond with CYC SEA.
FEBRUARY/ APRIL	Strategic Environmental Assessment completed based on Scoping, and Site Assessment methodology
MAY	2 ND PRE-SUBMISSION CONSULTATION FOR 8 WEEK PERIOD
JUNE/JULY	2 ND Consultation report written.
JULY	Submission of plan, SEA, Environmental report, Consultation report and Basic Conditions Statement to City of York with request to appoint an examiner
AUGUST/SEPTEMBER	CYC APPOINT EXAMINER
SEPTEMBER/ NOVEMBER	EXAMINERS REPORT AND REFERENDUM TO VILLAGERS

25 October 2016

REQUEST TO THE CITY OF YORK COUNCIL PLANNING DEPARTMENT AND CITY COUNCILLORS TO BE A DESIGNATED AREA FOR A NEIGHBOURHOOD PLAN AREA.

Request submitted in June 2014 and confirmed by the City in October 2014.

The two parishes of Nether and Upper Poppleton are situated approximately four miles north west from the centre of the historic city of York. The River Ouse bounds the village to the north and east and the A 59 York to Harrogate road to the south and west. Poppleton, Nether and Upper, consists of two old village cores, which have coalesced to form one community. Recent expansion in the Parish of new housing and commercial areas are now included within the parish boundaries and it is the whole parished area that is the subject of the Neighbourhood Plan.

The Parish Councils have jointly worked on a number of projects. Whilst meeting independently the Parish Councils represent the interest of all the residents of the area designated on the attached map. Nether and Upper Poppleton are statutory consultees on planning applications within the parishes. Consultation to date shows that there is a desire for a Neighbourhood Plan, particularly given the recent government legislation with regard to localism. The villages jointly produced a Village Design Statement in 2003 and this will give the initial platform for the development of a Neighbourhood Plan. The Parishes already manage and financially support many areas, including the village greens, the Millennium Green, the Moat Field and other significant green spaces. The Parish Councils give financial support to numerous village groups and organisations and actively keep parishioners informed through their websites, Twitter account, notice boards and regular newsletters.

The two parish councils are the official statutory first tier of government in this parished area and enjoy strong support of the local community. For the purposes of this submission it has been agreed that the Chairman of Nether Poppleton Parish Council, will act as the lead to the executive committee comprising initially 2 councillors from each Parish and other interested parties. The Councils have considerable collective knowledge of their areas and a deep understanding of the area's planning opportunities and constraints and how these interact with the aspirations and concerns of the residents of the parishes. Other parish residents have worked with the committee, and consultations have been extensive with local business on the three adjacent business parks, landowners and the City of York Planning Department.

15 June 2014

25 October 2016

NETHER WITH UPPER POPPLETON
NEIGHBOURHOOD PLAN COMMITTEE
TERMS OF REFERENCE

Objective

The objective of the Neighbourhood Plan Committee is to prepare a Neighbourhood Plan for the designated area, that defines the planning policy priorities identified by the community, taking into account all representations made during the plan-making process and having regard to all relevant existing plans and evidence.

The Neighbourhood Plan Committee will communicate with residents, land owners, village organisations, local schools, service providers and businesses to ensure that the Plan is totally representative of the local community and provide a progress report at each monthly meeting of both Parish Councils detailing progress and financial position.

Roles and responsibilities

- Promote the process of preparing the Neighbourhood Plan, determining the overall scope and objectives
- Manage the process of preparing the Neighbourhood Plan, producing and updating a timetable
- Communicate with statutory bodies and seek their input
- Make contact with and maintain links to City of York Council Planning and Environmental Management
- Liaise with relevant authorities and organisations to make the Neighbourhood Plan as effective as possible
- Gather data from as wide a range of sources to ensure that conclusions reached are fully evidenced
- Identify sources of funding, complete application forms and establish an audit trail with the lead Parish Council (Nether Poppleton) through its own financial responsibilities
- Report monthly to both Parish Councils and receive endorsements of decisions taken
- Ensure that the final draft of the Neighbourhood Plan is fully representative of the views of residents and other consultees
- Progress to independent examination
- Carry out a successful community referendum
- Arrange for adoption into the City of York Council as Planning Policy

Membership

25 October 2016

- The Neighbourhood Plan Committee will initially comprise two parish councillors from each Parish Council
- The membership will be reviewed from time to time to change or increase the membership as circumstances develop
- The Chairman will be elected from within the Committee

Meetings

- Committee meetings will take place regularly as least once per week initially and then latterly as progress determines at least monthly
- Decisions made by the Committee should normally be by consensus at Committee meetings

Funding

- All grants and funding will be applied for and held by Nether Poppleton Parish Council who will ring fence all monies for the Neighbourhood Plan work
- The Committee will notify both Parish Councils of expenditure and a separate account kept detailing expenditure of funding from Locality

Conduct and interests

- The Committee will follow the code of conduct agreed by the Parish Council code of conduct including declarations of interest
- Whilst members as individuals will be accountable to their parent organisations, the Committee as a whole is accountable to the wider community for ensuring that the Neighbourhood Plan reflects their collective expectations.

June 2014

25 October 2016

Appendix C

Upper Poppleton

Conservation Area No 16 (18.2 ha)

Introduction

Upper Poppleton Conservation Area was designated in 1993. Originally it embraced the village green and its approaches along Hodgson Lane and Main Street. On 16 December 2004 the Conservation Area was extended to include the following: Beechway Close and the adjoining part of Main Street; part of Long Ridge Lane: land and buildings south of Black Dike Lane; the remainder of Beech Grove and adjoining paddocks and gardens; paddocks to the rear of Model Farm, the Green and a small extension along School Lane. Also at the same time No 1-5 (consecutive) Grove Gardens were deleted from the Conservation Area.

History

The Old English name "popel" probably means "pebble" and "tun" implies a non-forested landscape or hamlet farm. Thus Poppleton may have originated as "a farmstead on pebbly soil" (a reference to local glacial sands and gravels) or "by a pebbly bank" (higher land on the edge of the river). "Upper" implies that the settlement is further from the river. The earliest reference to Upper Poppleton is in the Domesday Book recorded as a subsidiary land holder. The original manor house was probably sited close to the present house of that name. All Saints' Church was originally a "minster" church, thought to be of Norman beginnings, but was rebuilt in 1891. The railway came to Poppleton in 1848, later facilitating extensive 20C developments as a commuter settlement, the present population being about 1900 people.

Important Buildings

Several of the houses and farmhouses around the village green are listed buildings including Model Farmhouse and Barn, and Manor Farmhouse, together with their gates and railings. The listed buildings all date from 18C. Although not listed, All Saint's Church is also important to the character of the green.

Character

The triangular village green overlooked by houses on all sides creates Upper Poppleton's particular character. Roads approach each corner of the green and along two of these – Main Street and Hodgson Lane – subsidiary greens extend. Overall there is an interesting spatial quality, to which the several mature trees contribute. The pump and maypole epitomise the role of the green as the focal point of village life.

Attractive groups of 18C and 19C two-storey houses front onto the green, interspersed by some more recent development. The houses tend to be detached or in pairs. They are sited close together, often having small front gardens defined by boundary walls with several examples of fine wrought iron railings and gates. All Saints' Church is set back from the frontage and has mature pine trees in the churchyard.

On the south-east side of the green and along part of the north-west side, the medieval patterns of long narrow plots extending to the open fields remains, being important to the setting of the village. However the 20C housing development, which effectively links Nether Poppleton and Upper Poppleton, extends up to the rear of the frontage buildings on the north-east side of the village core.

Grin is the predominant building materials, and there are examples of different bonding such as English Garden Wall and Flemish Bond. Some properties are rendered brick. Roofing is generally of pantiles or Welsh slate.

The main elements of the character and appearance of the area are:-

25 October 2016

- 1 The essentially rural village quality of the green, with its individual triangular shape and the subsidiary greens leading from it.
- 2 The attractive groups of vernacular buildings, sufficient to create a cohesive overall character, and is valuable focal point in an area that has undergone extensive suburban expansion.
- 3 The rural setting that remains to the south-east and north-west of the village core.

Nether Poppleton

Conservation Area No 17 (19.7 ha)

Introduction

Nether Poppleton Conservation Area was designated in 1993. It includes the historic village core around St Everilda's Church Manor Farm, Church Lane and Main Street.

History

The Old English name "popel" probably means "pebble" and "tun" implies a non-forested landscape or hamlet farm. Thus Poppleton may have originated as "a farmstead on pebbly soil" (a reference to local glacial sands and gravels) or "by a pebbly bank" (higher land on the edge of the river). "Nether" suggest this settlement as the one closer to the river. Which of the two Poppletons came first is open to debate, but Nether Poppleton is most likely due to be the older. The earliest reference to Nether Poppleton is in a charter of Archbishop Oswald of 972. St Everilda's Church (only one other dedicated to this obscure 7C Saxon Saint is known) is mentioned in the Domesday Book. In 1088 St Everilda's and the manor of Nether Poppleton were given by Osbern de arches to St Mary's Abbey in York, an association which continued until the Dissolution. The moated site between the river and the present 18 C Manor House may well be the site of its medieval predecessor. Over 350 years ago, it is reputed that Prince Rupert quartered his troops in the Tithe Barn, before being defeated at Marston Moor. From its origins around the Church, the village developed westwards along Church Land and Main Street, where there was a ferry crossing. The village remained virtually unaltered until 20 C expansion as a commuter settlement. The present population is about 1530.

Important Buildings

The Church of St Everilda's (listed Grade 11) is 12C in origin with late medieval and subsequent rebuilding and restoration. It is built in limestone rubble and ashlar, with sandstone and brick in English Garden wall Bond, and a Welsh slate roof. The Church includes some 14C window glass. Manor Farm is a group of important listed buildings: the farmhouse (mid 18C with a 19C additions), the garage (probably 18C with walls approximately 1 metre thick) and the Barn of 15C or 16C origins, encased in brick in the 18C with a rebuilt east end and repairs in 1928. Main Street and its junction with Church Land contains several 18C listed houses, including the former schoolhouse of 1797. The gazebo north of the Fox in is also listed and dates from 1795.

Character

Sited discretely around a sharp bend in Church Lane, the original village nucleus of St Everilda's Church and Manor Farm retains a deeply rural and historic quality, with its important listed buildings, walls, trees and the moated site leading to the riverside. Church Lane "peters out" into a narrow lane and the setting of open fields remains.

This traditional open setting of the village continues for part of the way along the south side of Church Lane. From there onwards it is replaced by the more recent and extensive suburban style of development which in places has broken through onto Church Land and Main Street. However, to the North the relationship between the village and the river remains largely undisturbed, with long narrow fronted plots extending between the two.

25 October 2016

The main stretch of Church Lane is relatively wide. Groups of vernacular buildings are intermingled with more recent development. Overall, Church Lane is pleasant, its frontage given unity by the grass verges and trees, and the view ahead to the attractive groups of 18C houses at the junction with Main Street.

At the western end of Main Street, mostly 18C and 19C houses and cottages cluster around the road junction and down the hill, creating another focus of traditional village character. The interesting changes in ground level, with the sloping grass verges, add to the attractive compositions. The elevations of each of the traditional houses vary subtly, yet all share the same good proportions and period character. Main Street continues in a series of curves, tree-lined with beck running alongside and development set well back; a country land character, important as a rural edge for the settlement. Traditional building materials in the village are brick walling with pantile and some Welsh slate roofing. Amongst the listed buildings, English Garden wall or Flemish Bond brickwork is found. Properties have usually retained their original multi-paned vertical sliding sash windows.

The main elements of the character of and appearance of the area are:-

- 1 The genuinely rural character of Manor Farm and St Everilda's Church and the historic association with the origins of the village.
- 2 The continuity of Church Lane and Main Street, linking areas of historic and rural character through a series of curves and changes in level, revealing a pleasant sequence of views.
- 3 The landscape elements – trees and grass verges – and the way they unify areas of different character (It should be noted that earlier cobble verges exist under some grassed areas).
- 4 The traditional relationship between Nether Poppleton and the river which, with the cluster of historic buildings, keeps a sense of identity for the village, bearing in mind the extensive "hinterland" of suburban development has taken place.

List of books written about Poppleton from the History Society

River Roads and Railways : The Story of Transport in Poppleton(1991) Michael Fife, Ian Routledge and John Perkins

Scholars, Schools and Staff of Poppleton (1993) by 10 authors , edited by Michael Fife

Georgian Poppleton (1994) by Prudence Bebb

Exploring the Poppletons -Nether and Upper (1998) Mark Jones and Michael Fife

The Public Houses of Poppleton (1999) Barrie Davies

One Hundred Years of Poppleton Children's Sports Day (2000) by Helen Mackman

Poppleton War Memorial soldiers of 1914-1918 war (2017) due